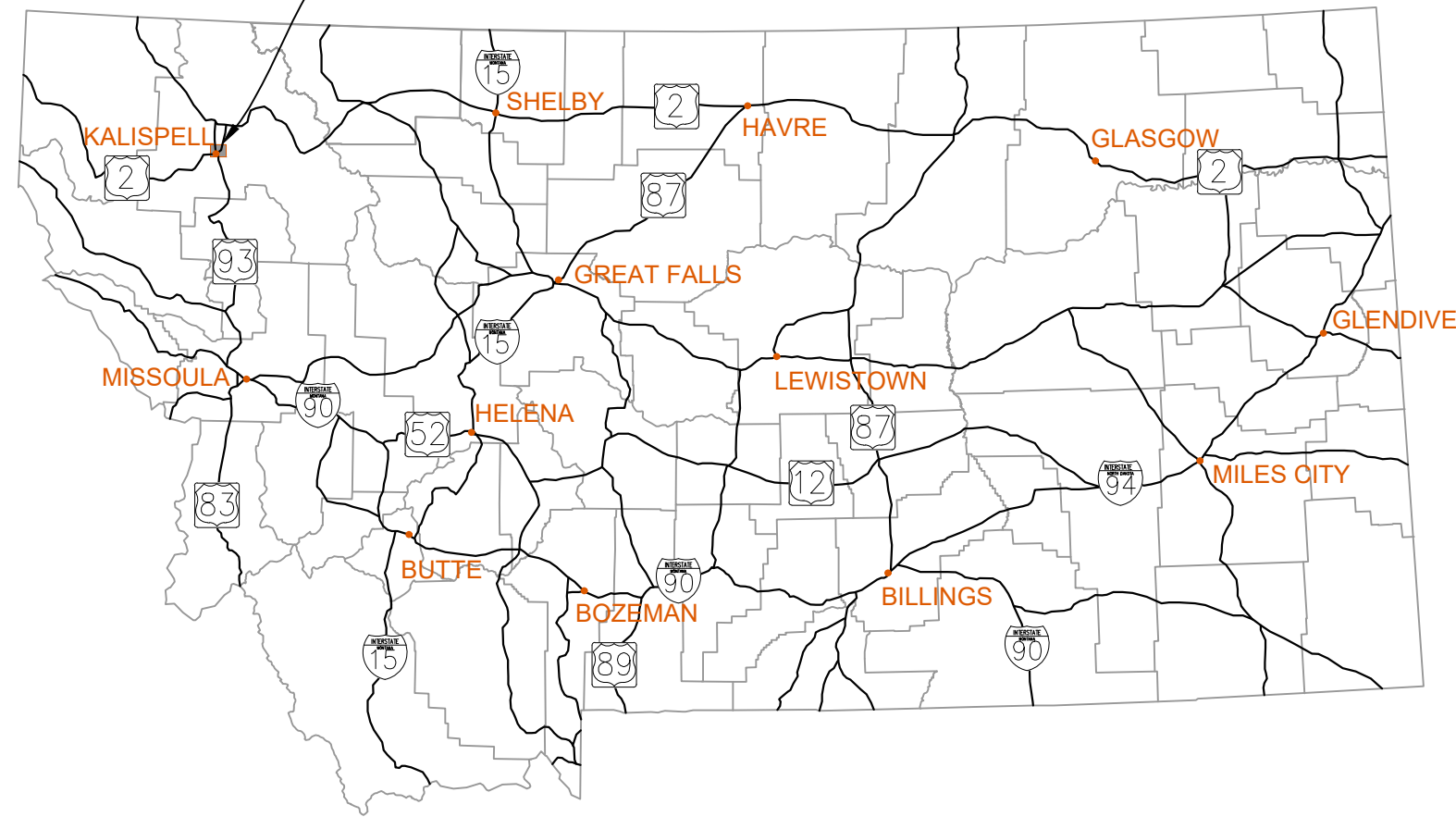


PROJECT LOCATION



RAIL PARK DRIVE SIDEWALK

KALISPELL, MT

FLATHEAD COUNTY, MONTANA

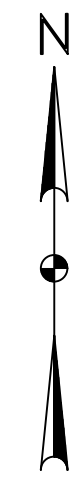
DECEMBER 2023

STATE OF MONTANA

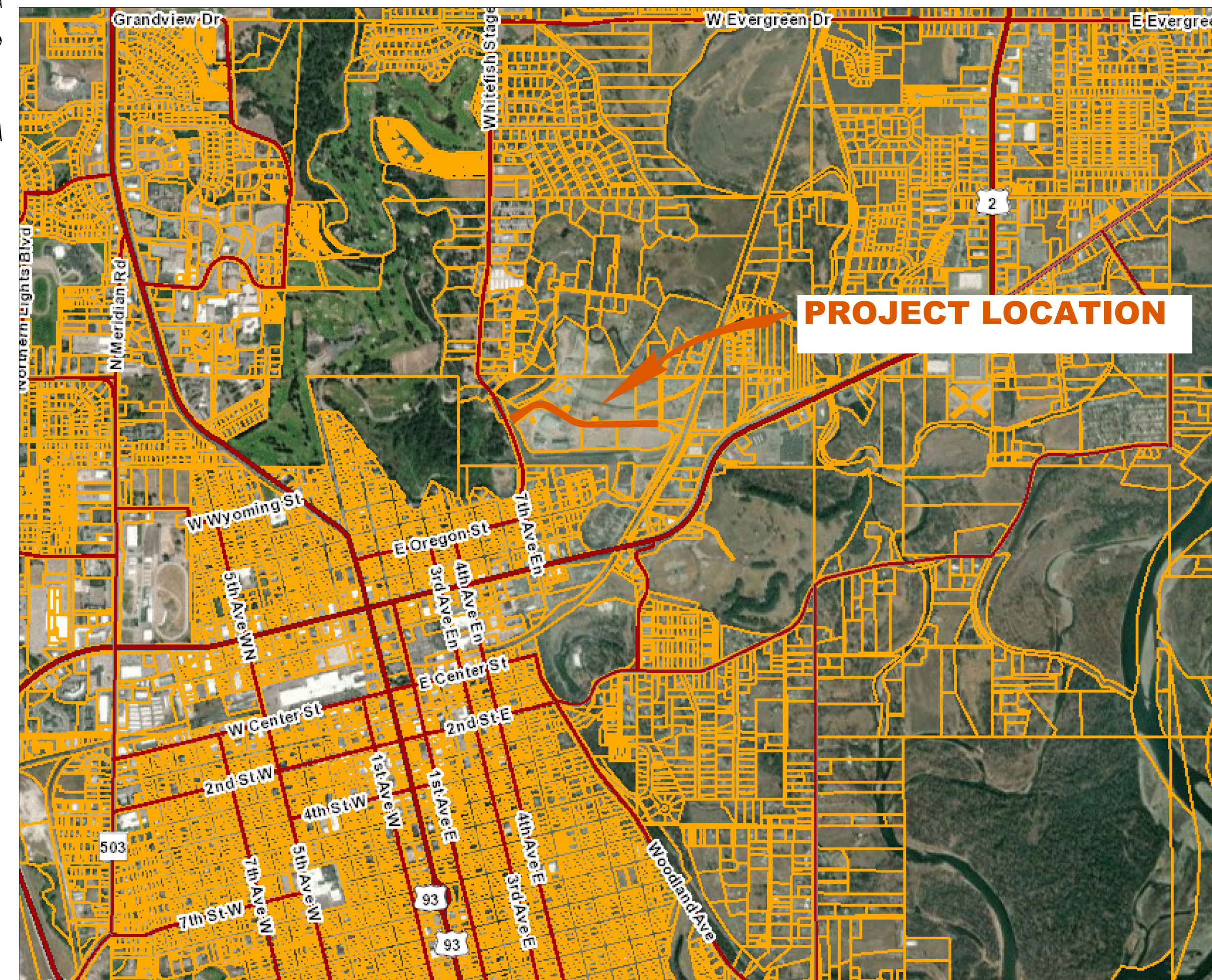
UTILITY COMPANIES
 KALISPELL CITY WATER AND SEWER
 201 1ST AVE E
 KALISPELL, MT
 PH: 406-758-7745

FLATHEAD ELECTRIC COOPERATIVE
 2510 HWY 2 E
 KALISPELL, MT
 PH: 406-755-6202

NORTH WESTERN ENERGY
 890 N MERIDIAN RD
 KALISPELL, MT
 PH: 888-467-2669



KALISPELL



VICINITY MAP
NO SCALE

INDEX OF SHEETS

G1	COVER SHEET
G2	LEGEND AND ABBREVIATIONS
G3	GENERAL NOTES
G4	HORIZONTAL ALIGNMENT AND SURVEY CONTROL
G5	TYPICAL SECTIONS
E1	EROSION CONTROL PLAN
C1 - C2	EXISTING CONDITIONS AND REMOVALS
C3 - C4	SITE LAYOUT
C5 - C6	GRADING PLAN
L1 - L4	LANDSCAPE PLAN
L5	LANDSCAPE DETAILS
D1	DETAILS

CERTIFICATION

I HEREBY CERTIFY THAT THE ATTACHED PLANS WERE PREPARED BY ME OR UNDER MY DIRECT SUPERVISION AND THAT I AM A DULY REGISTERED PROFESSIONAL ENGINEER IN THE STATE OF MONTANA.

DATE: _____



FLATHEAD COUNTY ECONOMIC
 DEVELOPMENT AUTHORITY
 44 2ND AVE W
 KALISPELL, MT 59901

1830 3RD AVENUE EAST, SUITE 201
 KALISPELL, MT 59901
 PH: 406.755.2763
 www.kljeng.com



KLJ PROJECT NO. 2325-01621

PROJECT NAME : RAIL PARK DRIVE SIDEWALK

LEGEND

EXISTING	ITEM	PROPOSED
	FIRE HYDRANT	
	GATE VALVE	
	CURB STOP	
	YARD HYDRANT	
	BEND	
	TEE	
	CROSS	
	REDUCER	
	COUPLER	
	VERTICAL BEND	
	WATER MANHOLE	
	SPRINKLER HEAD	
	WATER METER	
	CATHODIC TEST STATION	
	TRACER WIRE ACCESS BOX	
	SANITARY MANHOLE	
	SANITARY FORCEMAIN MANHOLE	
	SANITARY MANHOLE W. VALVE	
	CLEANOUT	
	STORM SEWER MANHOLE	
	CURB INLET	
	CATCH BASIN	
	POWER POLE	
	GUY WIRE	
	LIGHT POLE	
	ELECTRICAL PEDESTAL	
	ELECTRICAL METER	
	ELECTRICAL JUNCTION (PULL BOX)	
	ELECTRICAL BOX	
	ELECTRICAL OUTLET/PLUG-IN	
	ELECTRICAL MANHOLE	
	TELEPHONE MANHOLE	
	TELEPHONE PEDESTAL	
	CABLE TV PEDESTAL	
	FIBER OPTIC PEDESTAL	
	GAS METER	
	GAS MANHOLE	
	FUEL DISPENSER	
	UTILITY MARKER	
	GAS VENT PIPE	
	TREES CONIFEROUS/ DECIDUOUS	
	BUSH/SHRUB	
	SIGN	
	CONTROL POINT	
	BENCHMARK	
	PIPE CAP	
	MAIL BOX	
	PROPERTY PIN	

BASIS OF QUANTITIES

CLASS 5 GRAVEL	1.875 TON/CY
ASPHALT	2 TON/CY
TACK COAT	0.05 GAL/SY

ESTIMATED QUANTITIES

Item Code	Item Description	Units	Bid Qty
KALISPELL TRAIL AND COMPLETE STREET			
SCHEDULE 1: GENERAL REQUIREMENTS			
101	Mobilization	LS	1
102	Taxes, Bonds, & Insurance	LS	1
103	General Requirements	LS	1
SCHEDULE 2: REMOVAL AND RESET			
201	Erosion Control	LS	1
202	Miscellaneous Demo	LS	1
SCHEDULE 5: ROADWAY AREA & CURB RAMP			
501	4" Concrete Sidewalk	SY	2254
502	6" Concrete Sidewalk	SY	340
503	Reinforced Concrete Sidewalk	SY	72
504	Asphalt Concrete - 3" Thick	SY	95
505	Reinforced Portland Cement	SY	153
506	ADA Ramp	EA	3
507	Detectable Warning Devices	EA	3
SCHEDULE 6: SIGNING AND STRIPING			
601	Striping-White Epoxy	GAL	5
602	Posts - Tubular Steel - Square 2"x2" - Perforated (14 ga)	LF	72
603	Signs - Aluminum Reflective Sheet IV	SF	50
SCHEDULE 9: LANDSCAPING			
701	Soil Amendment and Fine Grading	CY	441
702	Grading Back of Walk	CY	150
703	Non-Irrigated Seed Mix	SF	37053
704	Trees	LS	1

LEGEND

EXISTING	ITEM	PROPOSED
	ASPHALT EDGE	
	BUILDING CANOPY	
	CABLE TV - UNDERGROUND	
	CENTERLINE	
	CONSTRUCTION LIMITS	
	ELECTRICAL - OVERHEAD	
	ELECTRICAL - UNDERGROUND	
	FENCE - BARBED WIRE	
	FENCE - CHAINLINK	
	FENCE - PLASTIC, VINYL	
	FENCE - WOOD	
	FENCE - WOVEN WIRE	
	FIBER - UNDERGROUND	
	GAS - UNDERGROUND	
	GRAVEL EDGE	
	SANITARY SEWER FORCE MAIN	
	SANITARY SEWER SERVICE LINE	
	SANITARY SEWER (LESS THAN 24")	
	SANITARY SEWER (24" OR MORE)	
	STORM SEWER EDGEDRAIN	
	STORM SEWER (LESS THAN 24")	
	STORM SEWER (24" OR MORE)	
	TELEPHONE - OVERHEAD	
	TELEPHONE - UNDERGROUND	
	WATER SERVICE LINE	
	WATER MAIN	

ABBREVIATIONS:

ALT = ALTERNATE
 ASP = ALUMINUM SPIRAL PIPE
 C.C. = CENTER TO CENTER
 CDF = CONTROLLED DENSITY FILL
 ELEV = ELEVATION
 E.W.F. = ENGINEERED WOOD FIBER
 EX = EXISTING
 FES = FLARED END SECTION
 FFE = FIRST FLOOR ELEVATION
 FG = FINISHED GRADE
 FL = FLOWLINE
 GB = GRADE BREAK
 HDPE = HIGH DENSITY POLYETHYLENE
 HP = HIGH POINT
 INV = INVERT
 LP = LOW POINT
 ME = MATCH EXISTING
 OAE = OR APPROVED EQUIVALENT

O.C. = ON CENTER
 OCS = OUTLET CONTROL STRUCTURE
 PC = POINT OF CURVATURE
 PERF = PERFORATED
 PT = POINT OF TANGENCY
 PVC = POLYVINYL CHLORIDE
 RCP = REINFORCED CONCRETE PIPE
 REINF = REINFORCED
 RIM = RIM ELEVATION OF CASTING
 SAN = SANITARY
 ST = STORM
 SVC = SERVICE
 TA = TOP OF ASPHALT
 TBC = TOP BACK OF CURB
 TC = TOP OF CONCRETE
 TF = TOP OF FIELD
 TW = TOP OF WALL
 TYP. = TYPICAL
 WM = WATERMAIN



GENERAL NOTES:

1. THESE NOTES APPLY TO THE ENTIRE PROJECT EXCEPT AS INDICATED OTHERWISE. CONTRACTOR SHOULD NOTE THAT ADDITIONAL CONSTRUCTION NOTES ARE INCLUDED ON INDIVIDUAL DRAWINGS.
2. THESE NOTES ARE FOR GENERAL REFERENCE IN CONJUNCTION WITH AND AS A SUPPLEMENT TO THE WRITTEN SPECIFICATIONS, DETAILS, ADDENDA AND CHANGE ORDERS ASSOCIATED WITH THE CONTRACT DOCUMENTS.
3. ANY ERRORS OR OMISSIONS DISCOVERED BY THE CONTRACTOR IN THE PLANS OR SPECIFICATIONS SHALL BE BROUGHT TO THE ATTENTION OF THE ENGINEER WHEN DISCOVERED. THE CONTRACTOR SHALL ALLOW TIME FOR CLARIFICATION.
4. REQUESTS FOR SUBSTITUTIONS OR DEVIATIONS FROM THE PLANS OR SPECIFICATIONS BY THE CONTRACTOR OR OWNER SHALL BE APPROVED IN WRITING BY THE ENGINEER PRIOR TO IMPLEMENTATION.
5. THE OWNER HAS HIRED KLJ TO PROVIDE CONSTRUCTION STAKING SERVICES. THE CONTRACTOR SHALL PROVIDE A MINIMUM OF 48 HOURS NOTICE TO THE SURVEYOR. KLJ INTENDS TO PROVIDE THE FOLLOWING ITEMS 1 TIME:
 - 5.a. SIDEWALK: EVERY 50'P
 - 5.b. ADA Ramps
6. THE CONTRACTOR SHALL PROTECT ALL SURVEY MONUMENTS. ANY MONUMENTS DISTURBED OR DESTROYED SHALL BE REPLACED BY A REGISTERED LAND SURVEYOR AT THE CONTRACTOR'S EXPENSE.
7. CONTRACTOR SHALL PROVIDE A ONE (1) WEEK NOTICE TO ENGINEER, OWNER, AND PROPERTY OWNERS PRIOR TO BEGINNING ANY CONSTRUCTION.
8. THE LOCATION OF EXISTING UNDERGROUND UTILITIES ARE SHOWN IN AN APPROXIMATE WAY ONLY AND HAVE NOT BEEN INDEPENDENTLY VERIFIED BY THE OWNER OR THEIR REPRESENTATIVES. THE CONTRACTOR SHALL DETERMINE THE EXACT LOCATION OF ALL EXISTING UTILITIES BEFORE COMMENCING WORK. UNDERGROUND LOCATES SHALL BE MADE BY USING THE "ONE CALL" NUMBER 1-800-795-0555 OR 811.
9. THIS PLAN SET INCLUDES A LEGEND OF GENERAL ABBREVIATIONS, SYMBOLS AND MATERIALS. SOME SYMBOLS, MATERIALS, AND ABBREVIATIONS MAY NOT BE UTILIZED ON THIS SPECIFIC PROJECT.
10. CONTRACTOR SHALL MAINTAIN A SET OF DRAWINGS TO DOCUMENT ANY DEVIATION FROM THE APPROVED UTILITY PLANS. CONTRACTOR SHALL NOTIFY ENGINEER PRIOR TO INSTALLATION IF ANY DEVIATIONS ARE NECESSARY AND ALLOW TIME FOR OWNER'S REPRESENTATIVE TO PROVIDE COMMENTS. CONTRACTOR SHALL PROVIDE RED-LINED DRAWINGS TO THE OWNER AND ENGINEER.
11. CONTRACTOR SHALL COORDINATE WITH OTHER ONSITE CONSTRUCTION CREWS WHEN WORKING NEAR OTHER PROJECTS UNDER CONSTRUCTION.

REMOVALS & DEMOLITION:

12. ANY EXISTING STRUCTURES DISTURBED BY CONSTRUCTION AND NOT CALLED FOR REMOVAL ARE TO BE RESTORED TO THEIR ORIGINAL LOCATION AND CONDITION. THIS INCLUDES ALL STRUCTURES SUCH AS CURB AND GUTTER, ADJACENT PAVEMENT, SIDEWALKS, ETC.
13. MISCELLANEOUS ITEMS INCLUDING, BUT NOT LIMITED TO, MAILBOXES, STREET LIGHTS, TRAFFIC LIGHTS, SIGNS, FENCES, POLES, ETC. SHALL BE PROTECTED OR REMOVED AND REINSTALLED BY THE CONTRACTOR WITH THE OWNERS AND PROPERTY OWNERS PERMISSION, AND THIS WORK SHALL BE INCIDENTAL TO THE CONTRACT.
14. EXCESS EXCAVATED MATERIAL INCLUDING PIPE, STUMPS, ROOTS, SOIL MATERIALS OR ANY OTHER ITEMS THE OWNER DOES NOT WISH TO SALVAGE SHALL BECOME THE CONTRACTOR'S PROPERTY AND SHALL BE REMOVED FROM THE SITE AND DISPOSED OF PROPERLY, INCIDENTAL TO THE CONTRACT.
15. THE CONTRACTOR SHALL COORDINATE WITH THE ENGINEER, OWNER AND THE APPROPRIATE UTILITY COMPANIES TO OBTAIN APPROVAL FOR AND DETERMINE THE EXTENTS OF REMOVAL, RELOCATION OR ABANDONMENT OF EXISTING ELECTRICAL, GAS AND COMMUNICATIONS LINES.

GRADING:

16. TOPSOIL SHALL BE FULLY REMOVED FROM AREAS TO BE EXCAVATED OR FILLED. TOPSOIL SHALL BE STOCKPILED ON EXISTING STOCKPILES WHERE INDICATED ON THE PLANS UNLESS APPROVED BY THE ENGINEER. EXCESS TOPSOIL SHALL BE STOCKPILED ONSITE.
17. SILT FENCING OR APPROPRIATE EROSION CONTROL MEASURES SHALL BE INSTALLED ON DOWNSTREAM SIDES OF STOCKPILES TO PROTECT RECEIVING WATERS FROM SEDIMENTATION. TOPSOIL STOCKPILES THAT WILL REMAIN FOR PERIODS IN EXCESS OF 14 DAYS SHOULD BE STABILIZED WITH TEMPORARY VEGETATION.
18. EXISTING CONTOURS ARE SHOWN AT EXISTING GRADE, AFTER THE COMPLETION OF THE GRADING PHASE PLANS.
19. PROPOSED CONTOURS ARE SHOWN AT FINISH GRADE.
20. CONTRACTOR SHALL REMOVE ALL DEMOLISHED OR CLEARED ITEMS FROM THE SITE; INCLUDING, BUT NOT LIMITED TO, VEGETATION, TREES, ROOT MASSES, DEBRIS, RUBBLE, AND GARBAGE. EXCESS FILL SOIL, TOPSOIL, AND UNSUITABLE NATURAL SOIL SHALL ALSO BE REMOVED FROM THE SITE. MATERIAL THAT DOES NOT CONTAIN DELETERIOUS MATERIAL MAY BE REUSED AS A BACKFILL IF APPROVED BY THE GEOTECHNICAL ENGINEER.
21. CONTRACTOR TO FOLLOW 3RD PARTY WORK PLAN.
22. SOIL ON KRY SITE MUST REMAIN ON KRY SITE PER THIRD PARTY WORK PLAN.

TRAFFIC CONTROL AND SIGNAGE:

23. THE CONTRACTOR SHALL MAINTAIN INGRESS/EGRESS ACCESS TO ADJACENT PROPERTY OWNERS AT ALL TIMES. THE CONTRACTOR SHALL KEEP THE DURATION OF ALL CLOSURES AND DETOURS TO A MINIMUM. SUBMIT TO THE ENGINEER A CONSTRUCTION PHASING

DIAGRAM FOR REVIEW AND APPROVAL:

24. THE CONTRACTOR SHALL FOLLOW THE MANUAL ON UNIFORM TRAFFIC CONTROL DEVICES (MUTCD) STANDARDS AND GUIDES FOR TRAFFIC CONTROL FOR STREET AND HIGHWAY CONSTRUCTION.

STORMWATER POLLUTION PREVENTION PLAN:

25. CONTRACTOR IS RESPONSIBLE FOR MINIMIZING TRACKING OF SOIL AND DEBRIS ONTO ADJACENT PROPERTIES AND PUBLIC ROADWAYS. TRACKING MUST BE REMOVED BY THE END OF EACH DAY.
26. THE CONTRACTOR SHALL BE REQUIRED TO CLEAN STREETS AND SIDEWALKS WITHIN AND ADJACENT TO THE PROJECT SITE IMPACTED BY CONSTRUCTION THROUGHOUT THE DURATION OF THE PROJECT. UPON PROJECT COMPLETION, CONTRACTOR SHALL PERFORM A FINAL CLEANING AND SHALL REPAIR ANY DAMAGES TO ONSITE AND ADJACENT IMPROVEMENTS CAUSED BY CONSTRUCTION TO PRECONSTRUCTION CONDITIONS.
27. ALL DISTURBED AREAS SHALL BE SEEDED WITH A SEED MIX AS INDICATED IN THE PROJECT SPECIFICATIONS.
28. CONTRACTOR SHALL REMOVE ALL EROSION CONTROL DEVICES WHEN 70% VEGETATION IS ESTABLISHED.
29. THE CONTRACTOR SHALL BE REQUIRED TO APPLY TO THE US EPA FOR COVERAGE UNDER THE NPDES GENERAL PERMIT AND TO COMPLETE A SWPPP. CONTRACTOR SHALL ABIDE BY ALL REQUIREMENTS OF THE NPDES PERMIT AND SWPPP. MAINTENANCE, INSPECTIONS, AND REMOVAL OF THE EROSION CONTROL MEASURES AND INSTALLATION OF ADDITIONAL EROSION CONTROL MEASURES SHALL BE CONSIDERED INCIDENTAL TO THE WORK PERFORMED.
30. THE CONTRACTOR SHALL COMPLY WITH ALL FEDERAL, STATE, AND LOCAL LAWS AND REGULATIONS CONTROLLING POLLUTION OF THE ENVIRONMENT. NECESSARY PRECAUTIONS SHALL BE TAKEN TO PREVENT POLLUTION OF STREAMS, LAKES, PONDS, AND RESERVOIRS WITH FUELS, OILS, BITUMENS, CHEMICALS, OR OTHER HARMFUL MATERIALS AND TO PREVENT POLLUTION OF THE ATMOSPHERE FROM PARTICULATE AND GASEOUS MATTER. THIS MAY MEAN EMPLOYING ADEQUATE DUST FILTERS, SMOKE COLLECTORS, CONTROLLING BURNING, WATERING HAUL ROADS, PROVIDING EROSION PROTECTION, OR ANY OTHER MEANS NEEDED TO MEET EXISTING REQUIREMENTS. NO ADDITIONAL PAYMENT WILL BE MADE TO THE CONTRACTOR FOR ANY EXPENSES NEEDED TO COMPLY WITH APPROPRIATE AIR AND WATER POLLUTION CONTROL STANDARDS.
31. IT IS THE CONTRACTOR'S RESPONSIBILITY TO BE FAMILIAR WITH ALL APPLICABLE MONTANA STATE DEPARTMENT OF ENVIRONMENTAL QUALITY REQUIREMENTS, PARTICULARLY "WATER QUALITY STANDARDS FOR SURFACE WATER OF MONTANA" AND "AIR POLLUTION CONTROL REGULATIONS", INCLUDING LOCAL AND FEDERAL REQUIREMENTS, PERTAINING TO CONTROL OF OR ABATEMENT OF AIR AND WATER POLLUTION.

NO.	DATE

DRAFTED	RH
REVIEWED	MR
PROJECT NUMBER	2325-01621
ISSUE DATE	DECEMBER 2023

GLACIER RAIL PARK
 FLATHEAD COUNTY ECONOMIC DEVELOPMENT AUTHORITY
 KALISPELL, MONTANA
 GENERAL NOTES

SHEET NO.	3
DWG. NO.	G3



SURVEY CONTROL				
Point Number	Easting	Northing	Elevation	Description
4	11092.8080'	9600.5270'	2977.030'	CP*5/8RBR 1.5IN KLI CP AC
5	12458.0150'	10461.6070'	2931.823'	CP*SET 5/8RBR 1.5IN KLI CP AC
6	9440.0510'	9067.3170'	2974.713'	CP*SET MAGNAIL W/ KLI WASHER
7	9957.4230'	9150.9130'	2973.150'	CP*SET 5/8RBR 1.5IN KLI CP AC
8	10356.3340'	9296.3880'	2974.174'	CP*SET MAGNAIL W/ KLI WASHER
9	11762.5550'	9178.3130'	2929.785'	CP*SET 5/8RBR 1.5IN KLI CP AC
10	11972.4290'	8789.3820'	2926.584'	CP*SET 5/8RBR 1.5IN KLI CP AC
11	11811.5290'	9521.2170'	2929.684'	CP*SET 5/8RBR 1.5IN KLI CP AC
12	12962.7210'	12026.9070'	2917.541'	CP*SET MAGNAIL W/ KLI WASHER
191	9743.8820'	10577.6160'	2961.382'	CP *2"AC_KLI

RAIL PARK DRIVE ALIGNMENT					
STATION	PI	NORTHING	EASTING	BEARING	DISTANCE
0+00	PI	9699.0547	10613.8357	N 64°14'25" E	51.55'
0+51.55	PC	9745.4837	10636.2401	N 61°25'36" E	39.51'
0+91.07	PT	9780.1778	10655.1351	N 58°39'52" E	185.87'
2+76.89	PC	9938.8043	10751.9127	S 88°02'42" E	560.66'
8+70.66	PT	10499.273	10732.6714	S 54°40'49" E	58.95'
9+29.61	PC	10547.372	10698.5905	S 72°25'40" E	453.99'
13+90.94	PT	10980.1783	10564.5272	N 89°49'29" E	996.82'
23+87.77	PC	11976.9946	10564.5766	S 80°52'17" E	161.67'

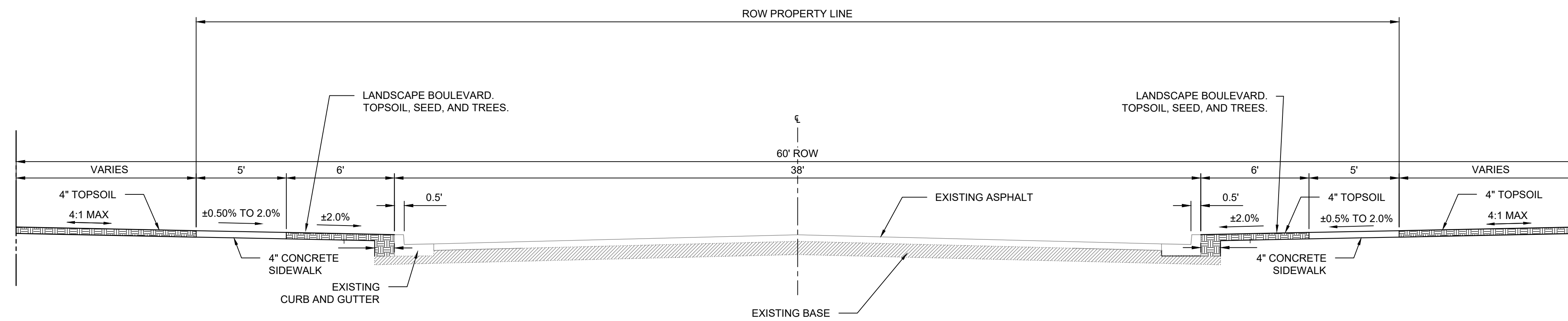
NO. DATE

DRAFTED
RH
REVIEWED
MR
PROJECT NUMBER
2325-01621
ISSUE DATE
DECEMBER 2023

GLACIER RAIL PARK
FLATHEAD COUNTY ECONOMIC DEVELOPMENT AUTHORITY
HORIZONTAL ALIGNMENT AND SURVEY CONTROL
HORIZONTAL ALIGNMENT AND SURVEY CONTROL

SHEET NO.
4
DWG. NO.
G4





RAIL PARK DRIVE TYPICAL SECTION
NOT TO SCALE

NO. DATE

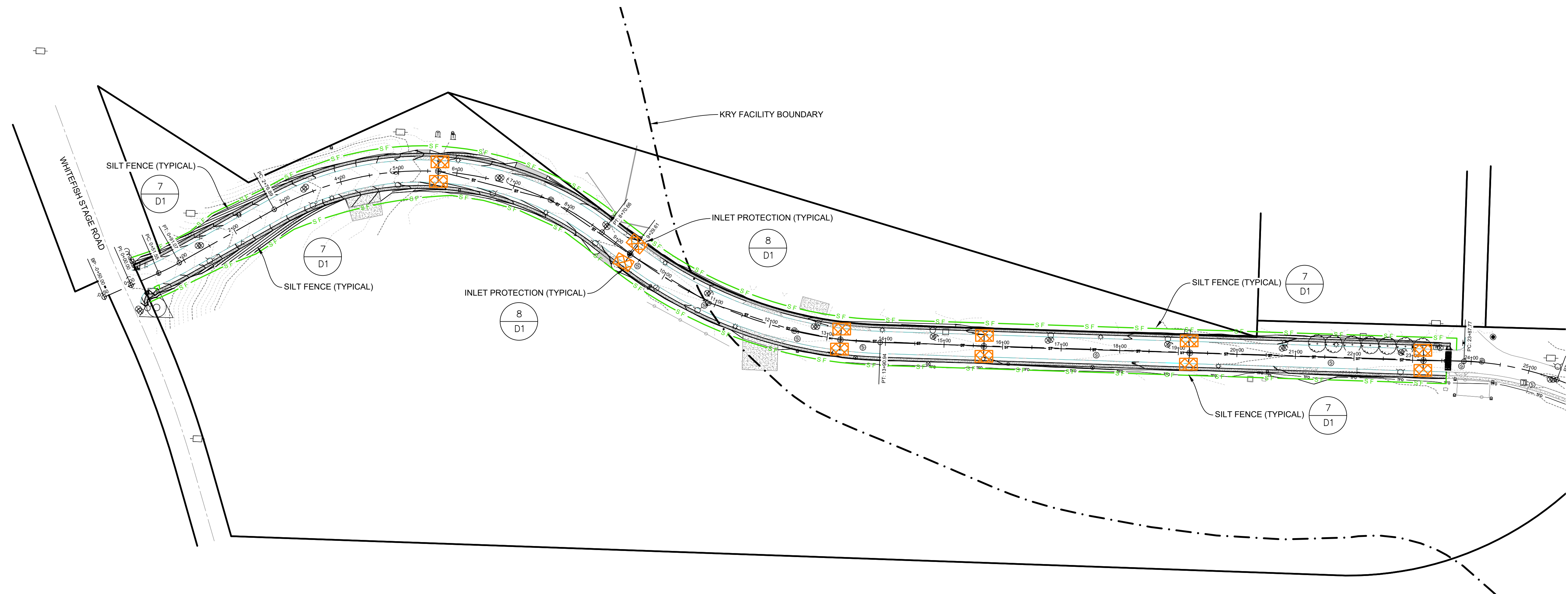
DRAFTED
RH
REVIEWED
MR
PROJECT NUMBER
2325-01621
ISSUE DATE
DECEMBER 2023

GLACIER RAIL PARK
FLATHEAD COUNTY ECONOMIC DEVELOPMENT AUTHORITY
KALISPELL, MONTANA
TYPICAL SECTIONS

SHEET NO.
5
DWG. NO.
G5



LEGEND
 — SF — SILT FENCE
 ☒ INLET PROTECTION



100 0 100 200
 SCALE NAVD88 FEET
 DRAWING SCALE IS 1" = 50' PRINTED ON 24"x36" PAPER

NO.	DATE
DRAFTED	RH
REVIEWED	MR
PROJECT NUMBER	2325-01621
ISSUE DATE	DECEMBER 2023

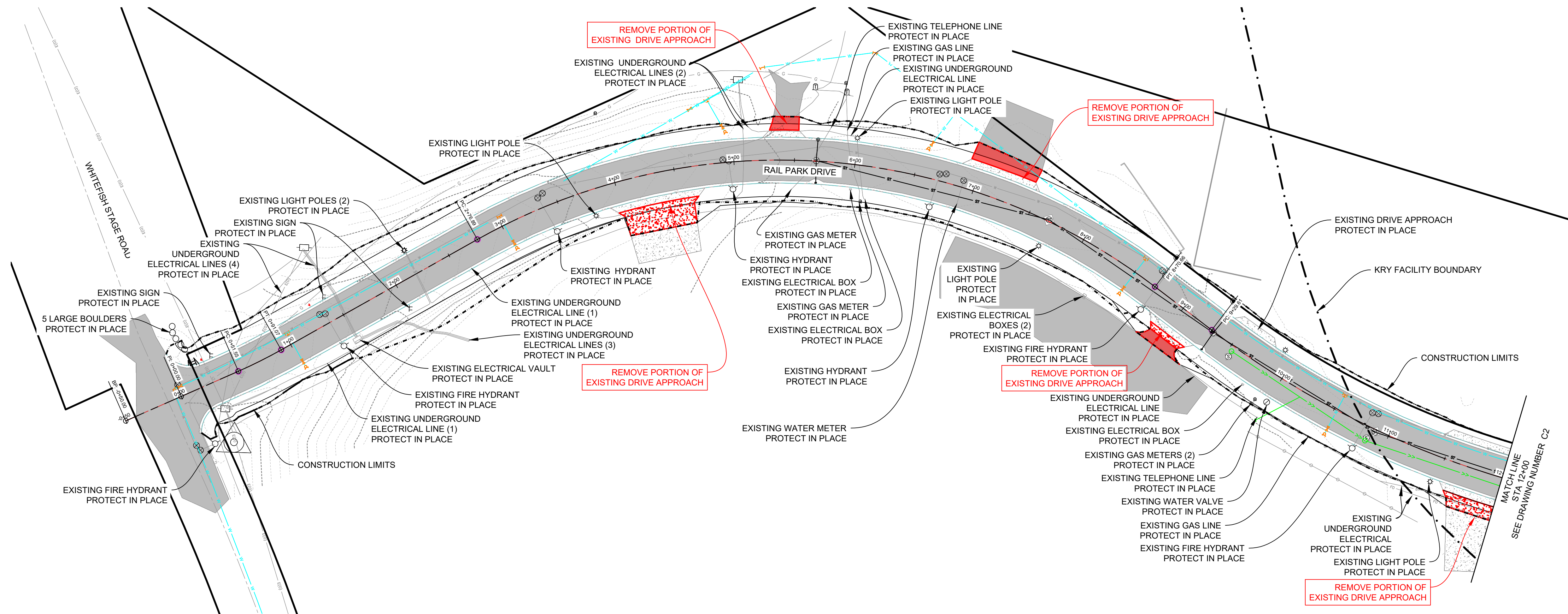
GLACIER RAIL PARK
 FLATHEAD COUNTY ECONOMIC DEVELOPMENT AUTHORITY
 KALISPELL, MONTANA
 EROSION CONTROL PLAN

SHEET NO.	11
DWG. NO.	E1

LEGEND



REMOVAL OF ASPHALT
REMOVAL OF CONCRETE
CONSTRUCTION LIMITS

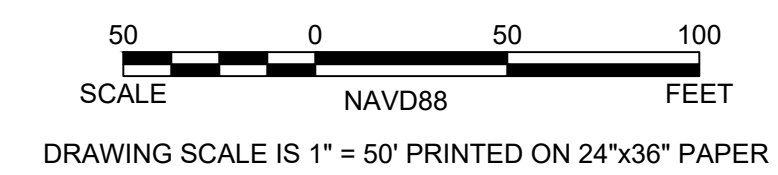


NO. DATE

DRAFTED	RH
REVIEWED	MR
PROJECT NUMBER	2325-01621
ISSUE DATE	DECEMBER 2023

GLACIER RAIL PARK
FLATHEAD COUNTY ECONOMIC DEVELOPMENT AUTHORITY
KALISPELL, MONTANA
EXISTING CONDITION AND REMOVALS STA 0+00 - 12+00

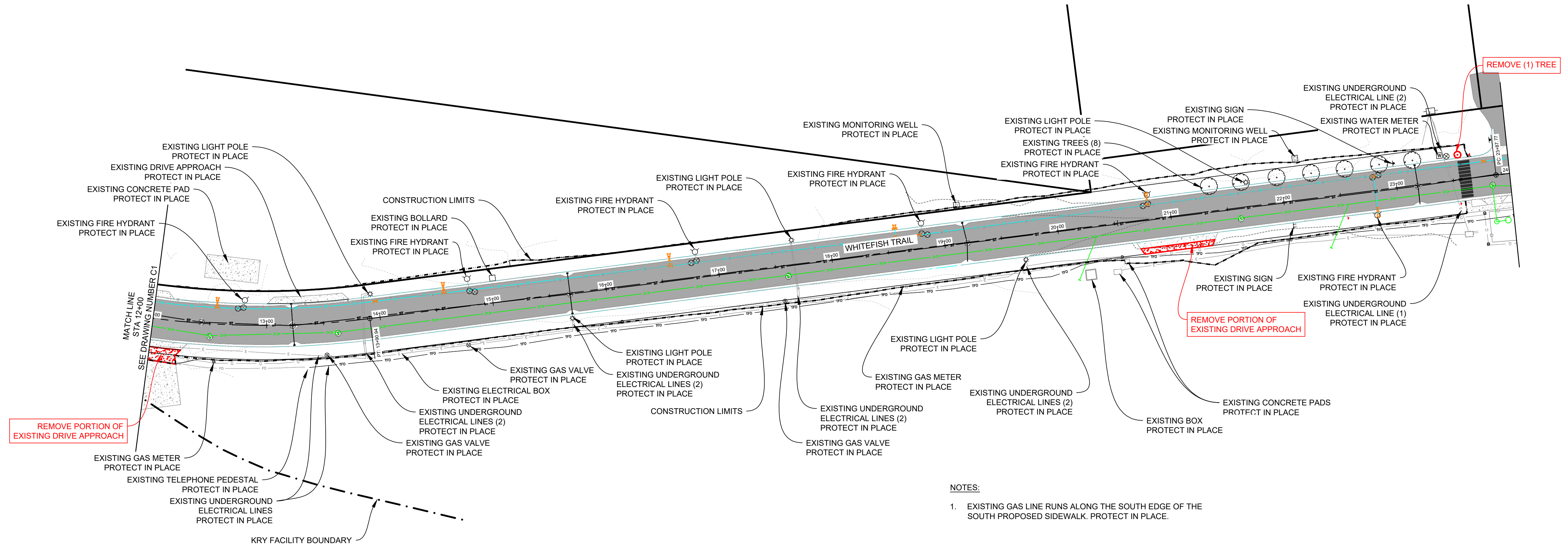
SHEET NO.	7
DWG. NO.	C1



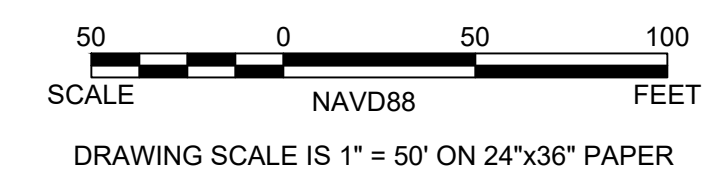
NO.	DATE
DRAFTED	RH
REVIEWED	MR
PROJECT NUMBER	2325-01621
ISSUE DATE	DECEMBER 2023

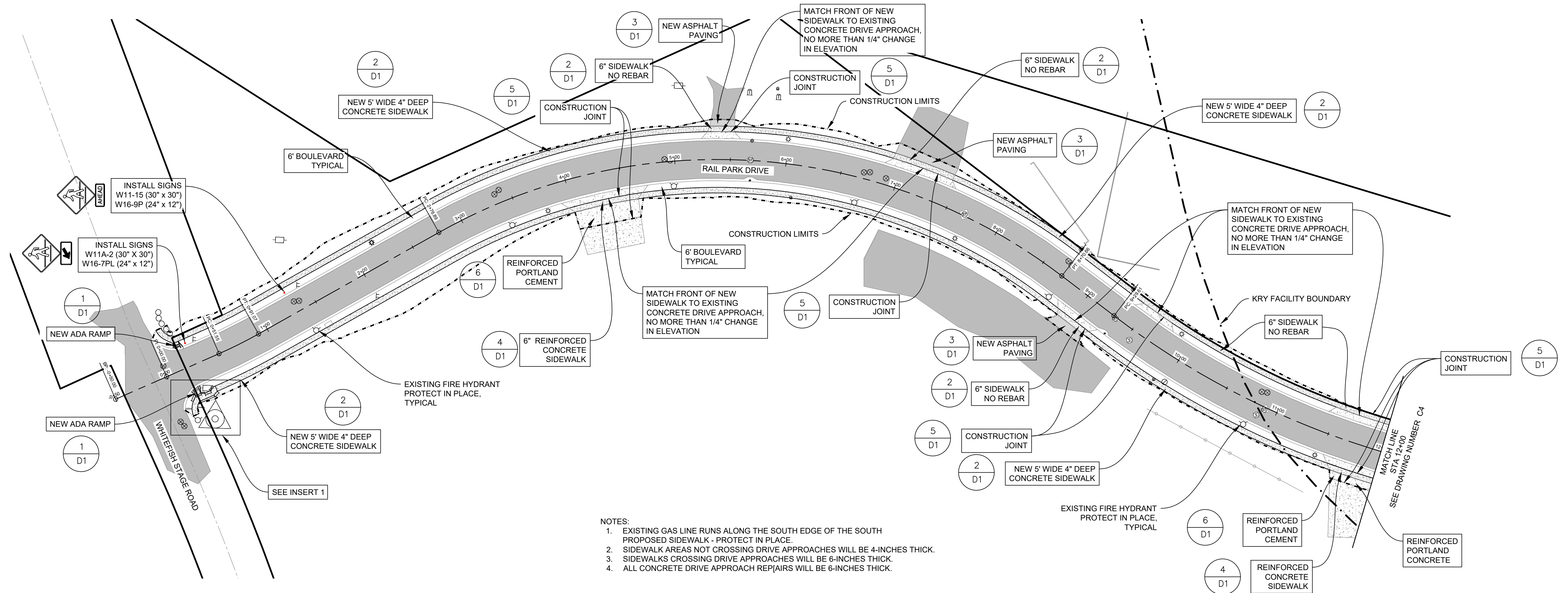
GLACIER RAIL PARK
 FLATHEAD COUNTY ECONOMIC DEVELOPMENT AUTHORITY
 KALISPELL, MONTANA
 EXISTING CONDITIONS AND REMOVALS STA 12+00 TO 24+00

SHEET NO.	8
DWG. NO.	C2

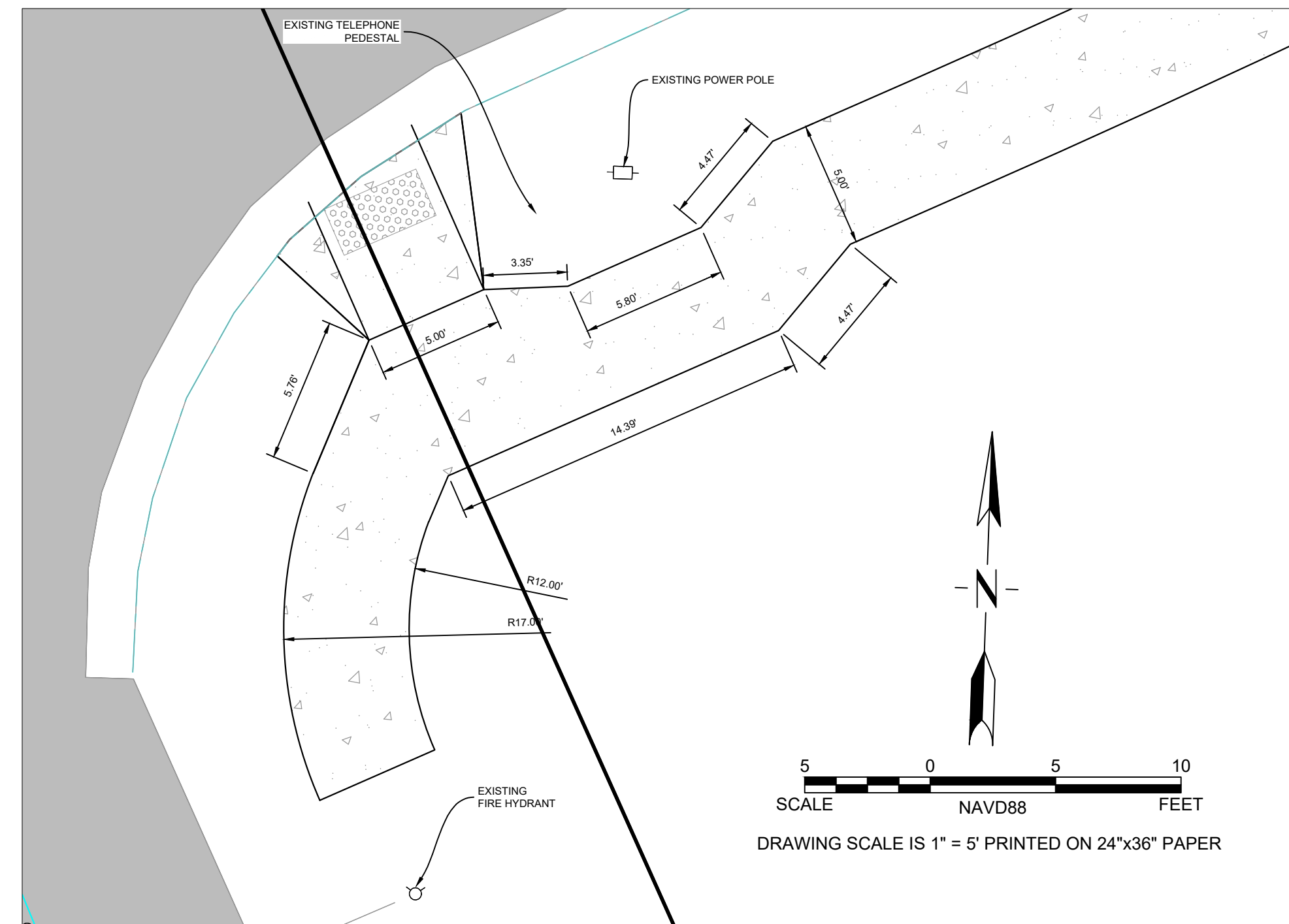


- NOTES:**
- EXISTING GAS LINE RUNS ALONG THE SOUTH EDGE OF THE SOUTH PROPOSED SIDEWALK. PROTECT IN PLACE.



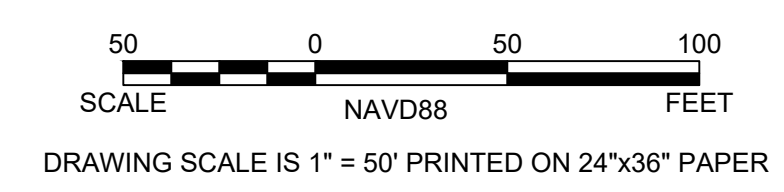


- NOTES:**
- EXISTING GAS LINE RUNS ALONG THE SOUTH EDGE OF THE SOUTH PROPOSED SIDEWALK - PROTECT IN PLACE.
 - SIDEWALK AREAS NOT CROSSING DRIVE APPROACHES WILL BE 4-INCHES THICK.
 - SIDEWALKS CROSSING DRIVE APPROACHES WILL BE 6-INCHES THICK.
 - ALL CONCRETE DRIVE APPROACH REPAIRS WILL BE 6-INCHES THICK.



INSERT 1

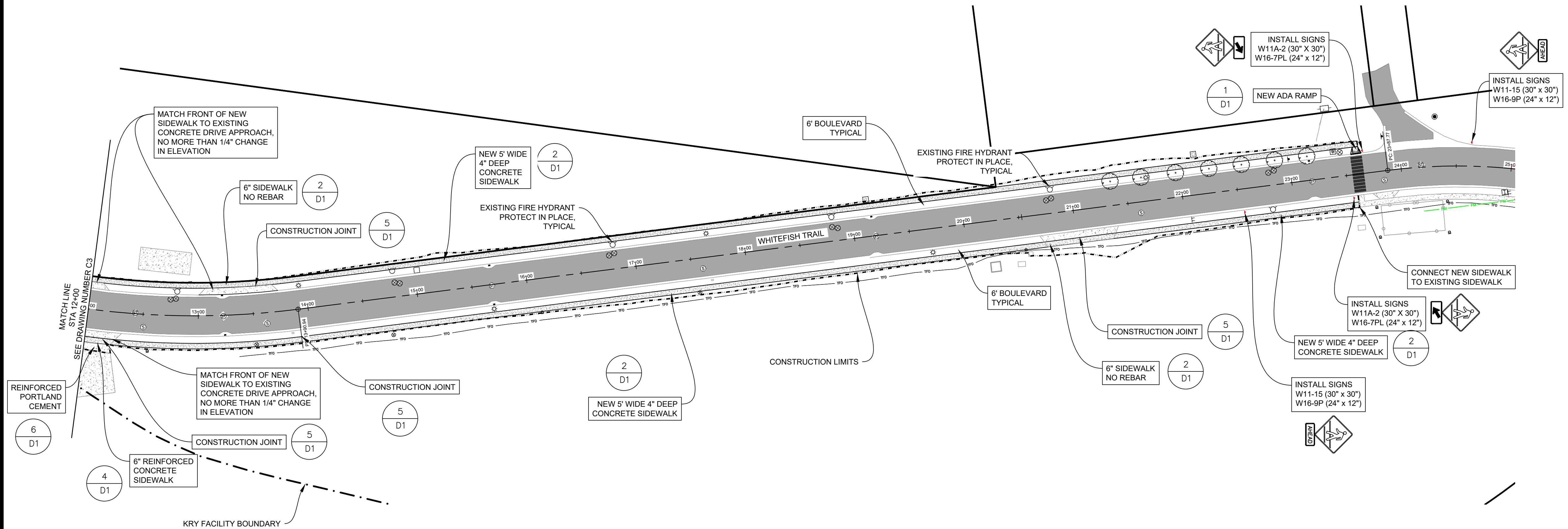
SIGN	STATION	OFFSET
W11A-2 30" x 30" W16-7PL 24" x 12"	0+27.22	LT 21.08'
W11A-2 30" x 30" W16-9P 24" x 12"	1+29.37	LT 20.94'
W11A-2 30" x 30" W16-9P 24" x 12"	22+54.46	RT 21.1'
W11A-2 30" x 30" W16-7PL 24" x 12"	23+54.56	RT 20'
W11A-2 30" x 30" W16-7PL 24" x 12"	23+66.78	LT 20.8'
W11A-2 30" x 30" W16-9P 24" x 12"	24+63.49	LT 21.59'



NO.	DATE
DRAFTED	RH
REVIEWED	MR
PROJECT NUMBER	2325-01621
ISSUE DATE	DECEMBER 2023

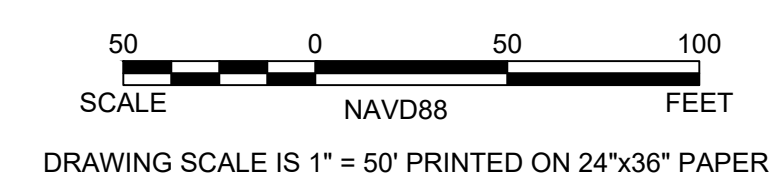
GLACIER RAIL PARK
 FLATHEAD COUNTY ECONOMIC DEVELOPMENT AUTHORITY
 KALISPELL, MONTANA
 SITE LAYOUT STA 0+00 - 12+00

SHEET NO.	9
DWG. NO.	C3



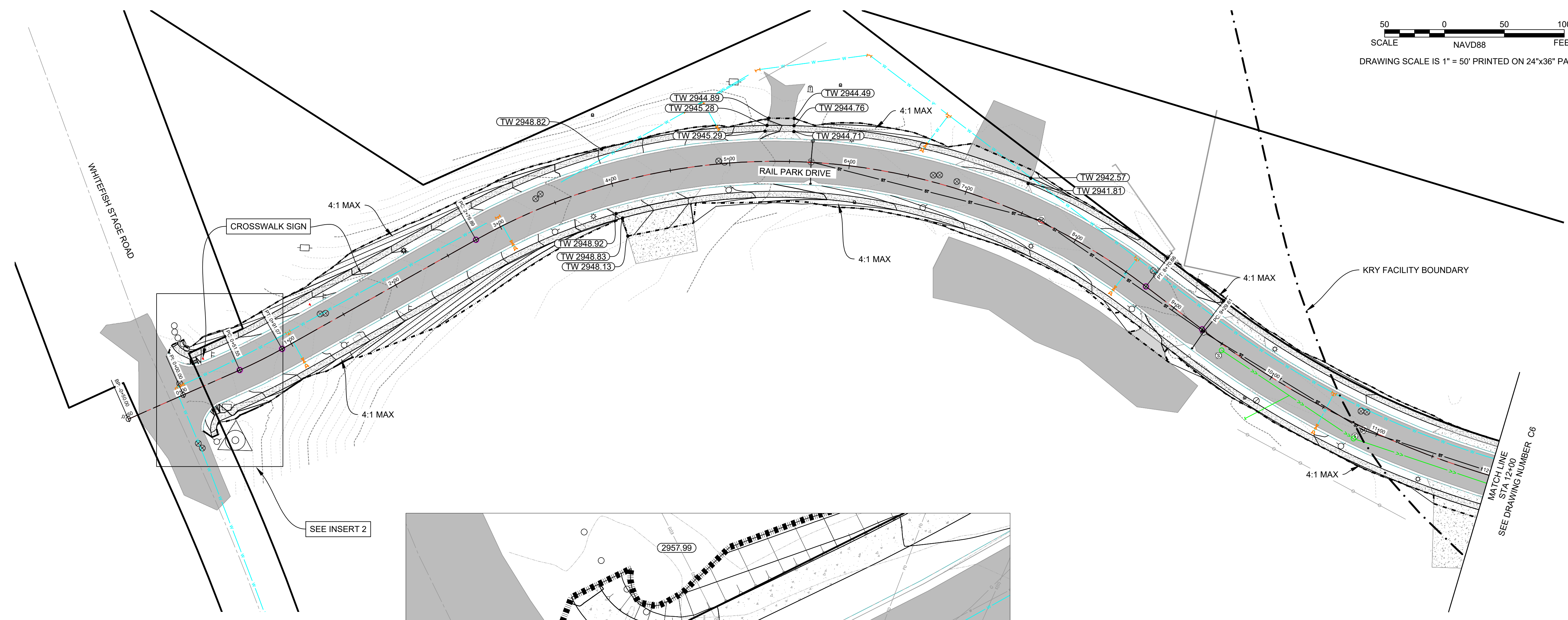
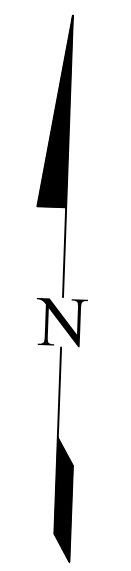
- NOTES:
- EXISTING GAS LINE RUNS ALONG THE SOUTH EDGE OF THE SOUTH PROPOSED SIDEWALK - PROTECT IN PLACE.
 - SIDEWALK AREAS NOT CROSSING DRIVE APPROACHES WILL BE 4-INCHES THICK.
 - SIDEWALKS CROSSING DRIVE APPROACHES WILL BE 6-INCHES THICK.
 - ALL CONCRETE DRIVE APPROACH REPAIRS WILL BE 6-INCHES THICK.

SIGN	STATION	OFFSET
W11A-2 30" x 30"	0+27.22	LT 21.08'
W16-7PL 24" x 12"		
W11A-2 30" x 30"	1+29.37	LT 20.94'
W16-9P 24" x 12"		
W11A-2 30" x 30"	22+54.46	RT 21.1'
W16-9P 24" x 12"		
W11A-2 30" x 30"	23+54.56	RT 20'
W16-7PL 24" x 12"		
W11A-2 30" x 30"	23+66.78	LT 20.8'
W16-7PL 24" x 12"		
W11A-2 30" x 30"	24+63.49	LT 21.59'
W16-9P 24" x 12"		





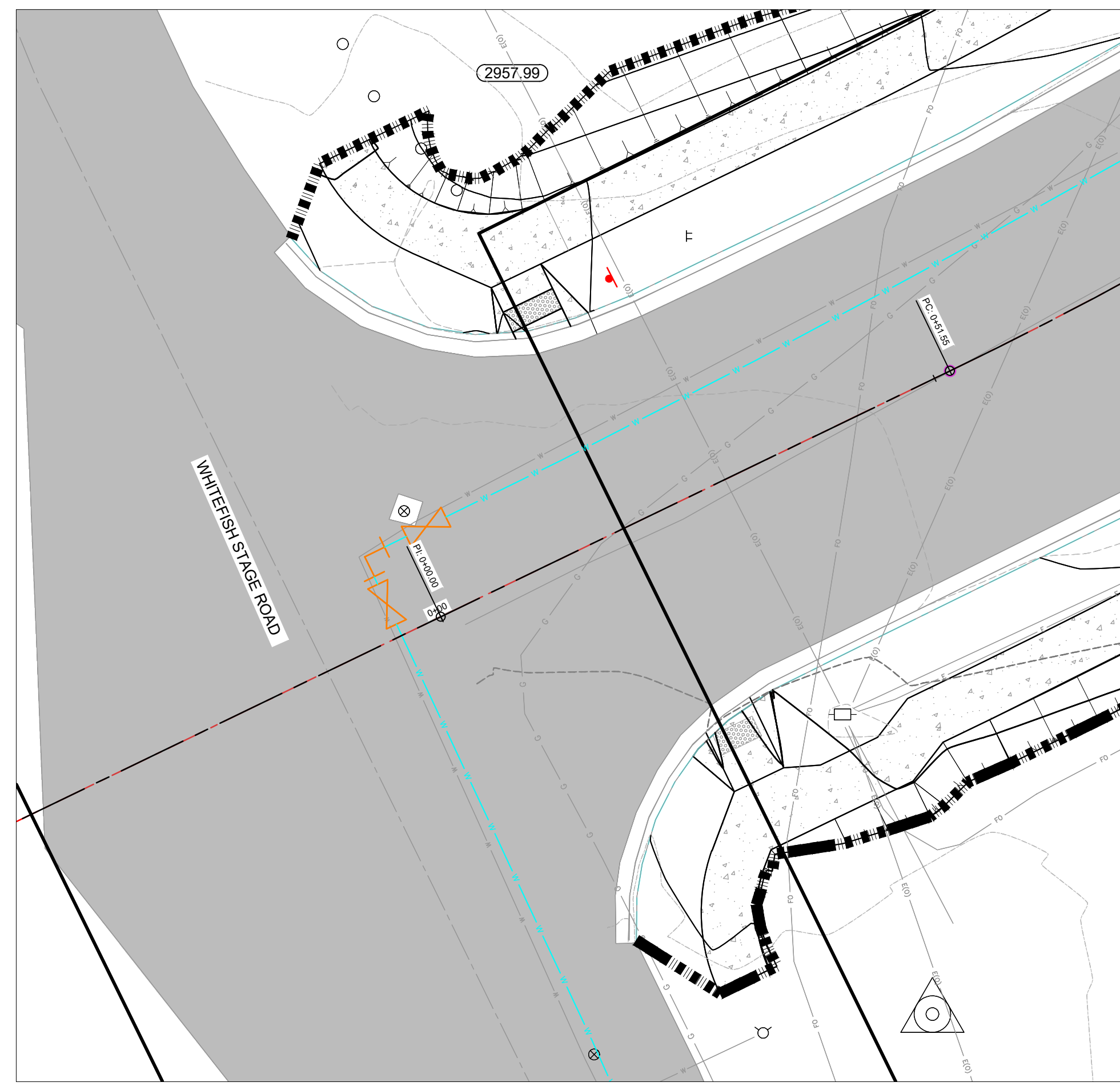
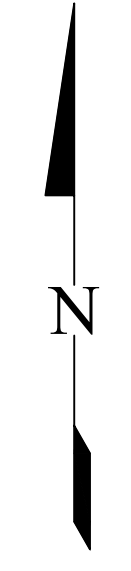
50 0 50 100
SCALE NAVD88 FEET
DRAWING SCALE IS 1" = 50' PRINTED ON 24"x36" PAPER



SEE INSERT 2

CROSSWALK SIGN	STATION
NORTH SIDE OF WHITEFISH TRAIL	
CROSSWALK WITH ARROW SIGN BELOW	0+28
CROSSWALK WITH AHEAD SIGN BELOW	1+80
CROSSWALK WITH ARROW SIGN BELOW	23+17
CROSSWALK WITH AHEAD SIGN BELOW	25+17
SOUTH SIDE OF WHITEFISH TRAIL	
CROSSWALK WITH AHEAD SIGN BELOW	22+00
CROSSWALK WITH ARROW SIGN BELOW	23+54

50 0 50 100
SCALE NAVD88 FEET
DRAWING SCALE IS 1" = 10' PRINTED ON 24"x36" PAPER



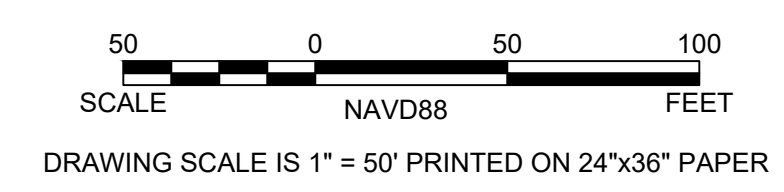
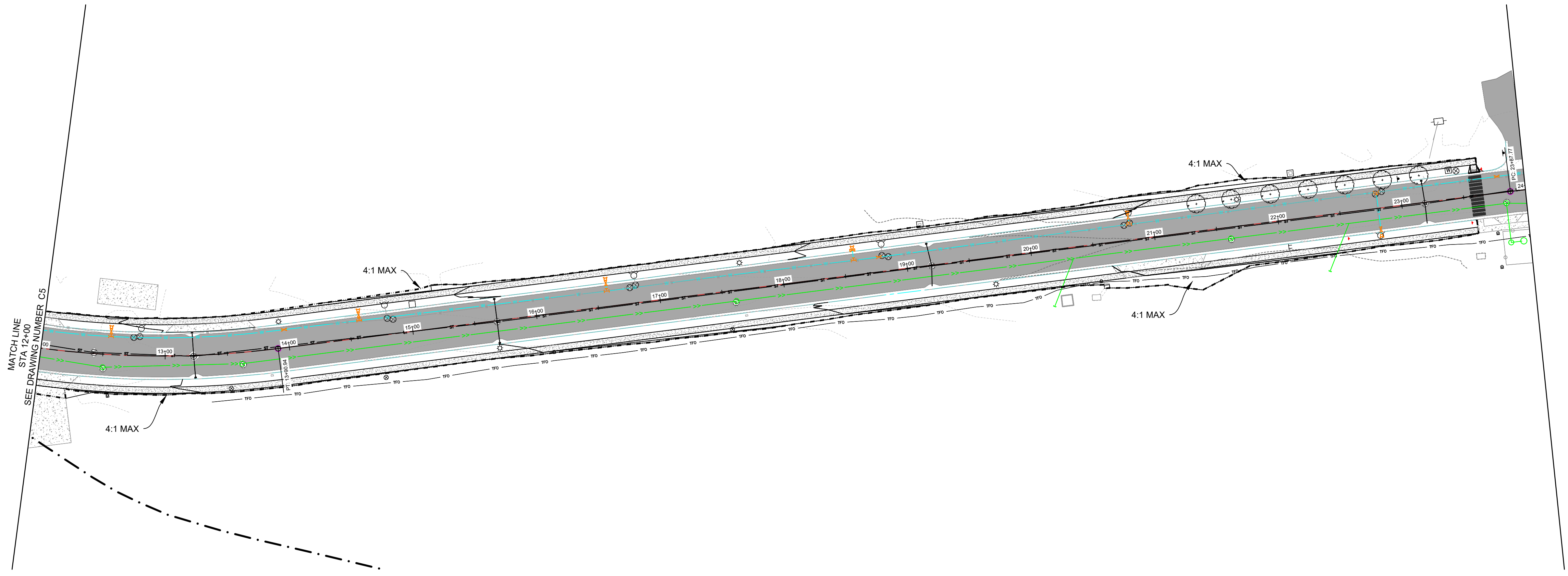
INSERT 2

NO.	DATE

DRAFTED	RH
REVIEWED	MR
PROJECT NUMBER	2325-01621
ISSUE DATE	DECEMBER 2023

GLACIER RAIL PARK
FLATHEAD COUNTY ECONOMIC DEVELOPMENT AUTHORITY
KALISPELL, MONTANA
GRADING PLAN STA 0+00 - 12+00

SHEET NO.	11
DWG. NO.	C5



NO.	DATE

DRAFTED	RH
REVIEWED	MR
PROJECT NUMBER	2325-01621
ISSUE DATE	DECEMBER 2023

GLACIER RAIL PARK
 FLATHEAD COUNTY ECONOMIC DEVELOPMENT AUTHORITY
 KALISPELL, MONTANA
 GRADING PLAN STA 12+00 TO 24+00

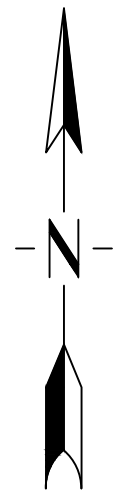
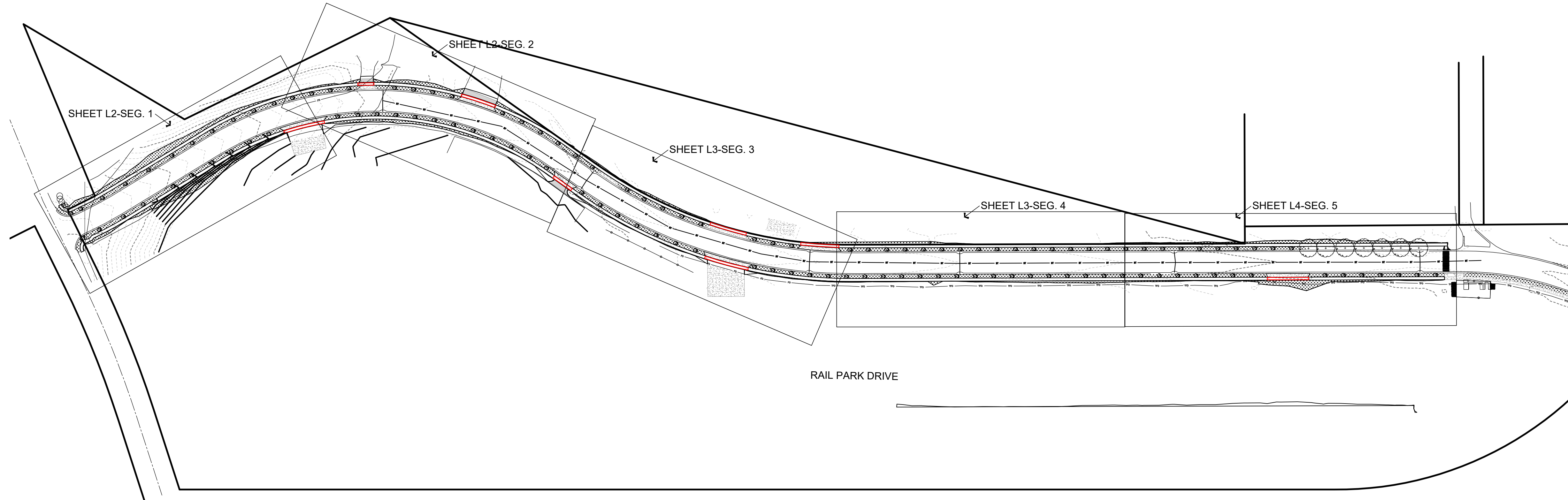
SHEET NO.	12
DWG. NO.	C6

NOTES:

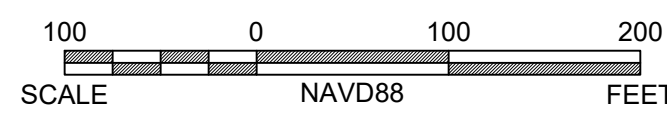
1. SEE SHEET L5 FOR SEEDING INFORMATION ALONG R/W
2. CONTRACTOR SHALL REFERENCE CITY OF KALISPELL'S TREE PLANTING SPECIFICATIONS FOR TREE PLANTING DETAIL:
http://www.kalispell.com/parks_and_recreation/documents/NEWTREEPLANTING2012.pdf
3. FOR LIST OF ACCEPTABLE TREES SEE:
<https://www.kalispell.com/documentcenter/view/3092/recommended-boulevard-trees-for-kalispell-3-2020>
4. SELECTION MUST BE FROM SMALL TREE SECTION ONLY.
5. MUST BE HARDY & FLOURISH IN SOIL LACKING NUTRIENTS

LEGEND

SYMBOL	DESCRIPTION
	TREE SYMBOLS VARY, FOR SPECIES SEE SCHEDULE.
	AREA TO BE NON-IRRIGATED SEEDED, SEE SPEC.
	AREA OF AREA TO BE SEEDED



LANDSCAPE PLAN OVERVIEW



DRAWING SCALE IS 1" = 100' PRINTED ON 24"x36" PAPER

ONE CALL
BEFORE DIGGING
1-800-424-5555

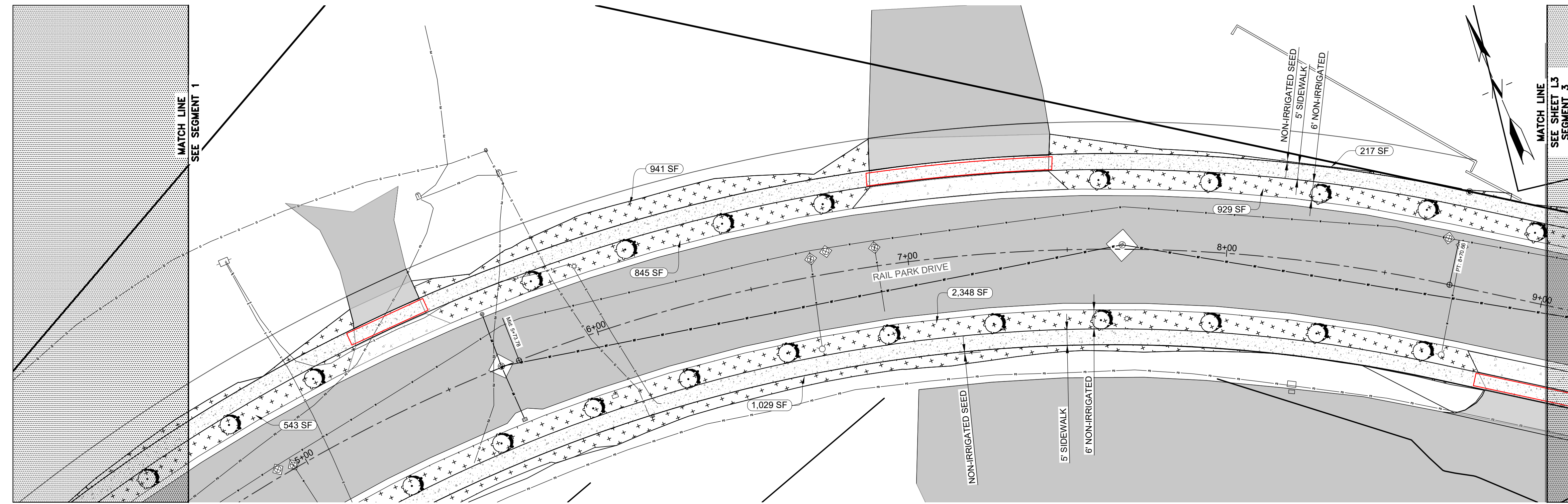
CONTRACTOR TO LOCATE
UTILITIES PRIOR TO PLANTING

NO.	DATE	DESCRIPTION

DRAFTED RH
REVIEWED MR
PROJECT NUMBER 2325-01621
ISSUE DATE DECEMBER 2023

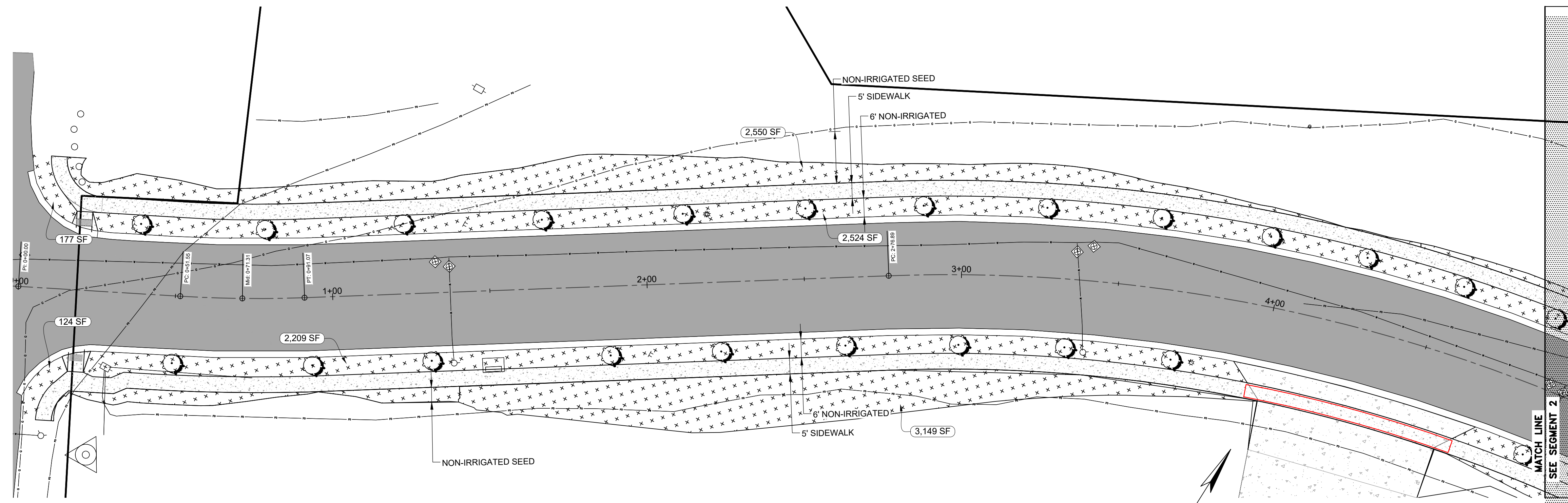
GLACIER RAIL PARK
 FLATHEAD COUNTY ECONOMIC DEVELOPMENT AUTHORITY
 KALISPELL, MONTANA
LANDSCAPE PLAN

SHEET NO. 11
DWG. NO. L1



SEGMENT 2

SYMBOL	DESCRIPTION
	TREE SYMBOLS VARY, FOR SPECIES SEE SCHEDULE.
	AREA TO BE NON-IRRIGATED SEEDED, SEE SPEC.
	AREA OF AREA TO BE SEEDED



SEGMENT 1

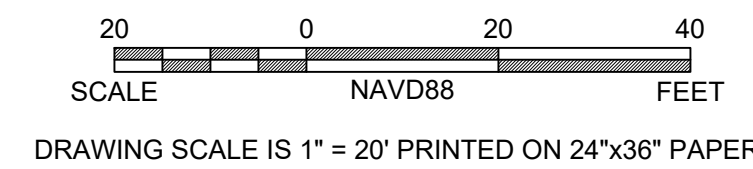
NOTES:

1. SEE SHEET L5 FOR SEEDING INFORMATION ALONG R/W
2. SEE SHEET L5 FOR TREE INFORMATION IN BOULEVARD
3. TREE SPACING TO BE BETWEEN 30'-35'
4. ADJUST TREE SPACING TO AVOID CONFLICTS WITH EXISTING SIGNS, LIGHT POLE, ETC.

APPROXIMATE EXISTING UTILITIES LOCATIONS ADDED IN STREET

ONE CALL BEFORE DIGGING
1-800-424-5555

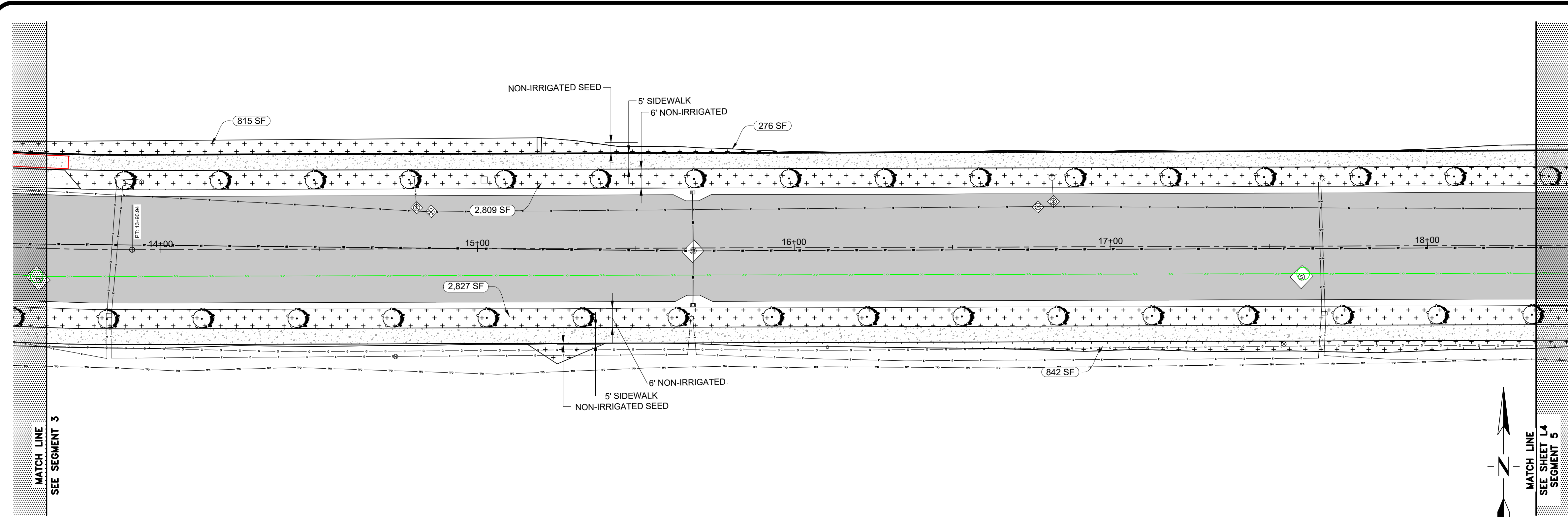
CONTRACTOR TO LOCATE UTILITIES PRIOR TO PLANTING



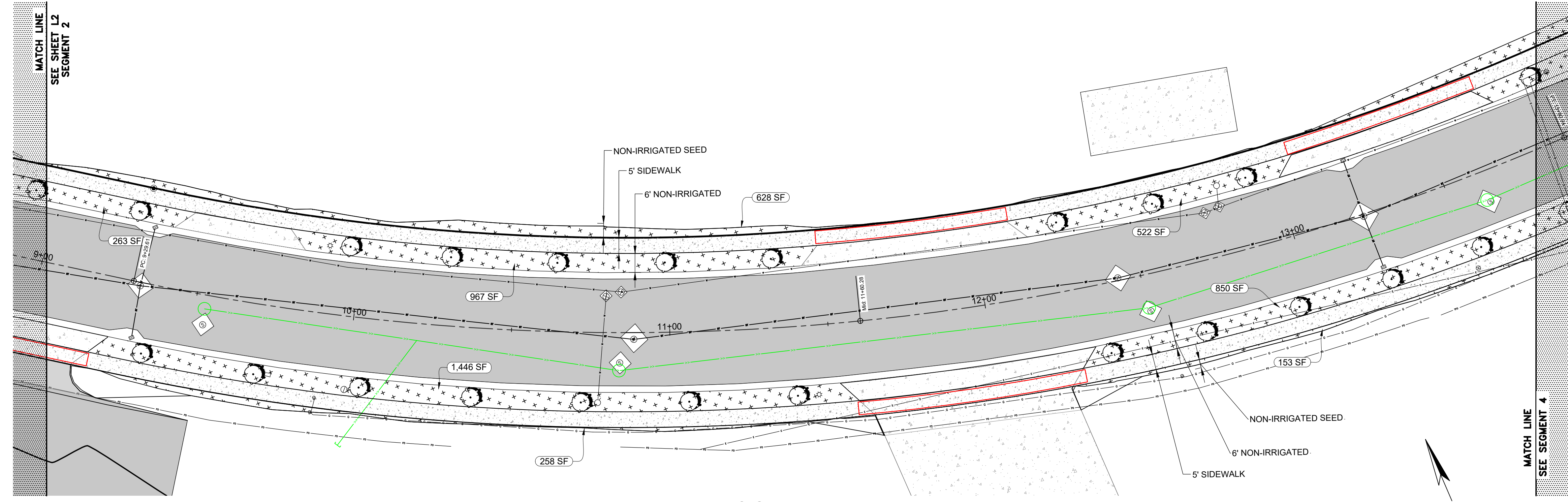
NO.	DATE	DESCRIPTION
DRAFTED		
RH		
REVIEWED		
MR		
PROJECT NUMBER 2325-01621		
ISSUE DATE DECEMBER 2023		

GLACIER RAIL PARK
FLATHEAD COUNTY ECONOMIC DEVELOPMENT AUTHORITY
KALISPELL, MONTANA
LANDSCAPE PLAN

SHEET NO.	14
DWG. NO.	L2



SYMBOL	DESCRIPTION
	TREE SYMBOLS VARY, FOR SPECIES SEE SCHEDULE.
	AREA TO BE NON-IRRIGATED SEEDED, SEE SPEC.
	AREA OF AREA TO BE SEEDED



- NOTES:
1. SEE SHEET L5 FOR SEEDING INFORMATION ALONG R/W
 2. SEE SHEET L5 FOR TREE INFORMATION IN BOULEVARD
 3. TREE SPACING TO BE BETWEEN 30'-35'
 4. ADJUST TREE SPACING TO AVOID CONFLICTS WITH EXISTING SIGNS, LIGHT POLE, ETC.

APPROXIMATE EXISTING UTILITIES LOCATIONS ADDED IN STREET



CONTRACTOR TO LOCATE UTILITIES PRIOR TO PLANTING



DRAWING SCALE IS 1" = 20' PRINTED ON 24"x36" PAPER

NO.	DATE	DESCRIPTION
1		
2		
3		

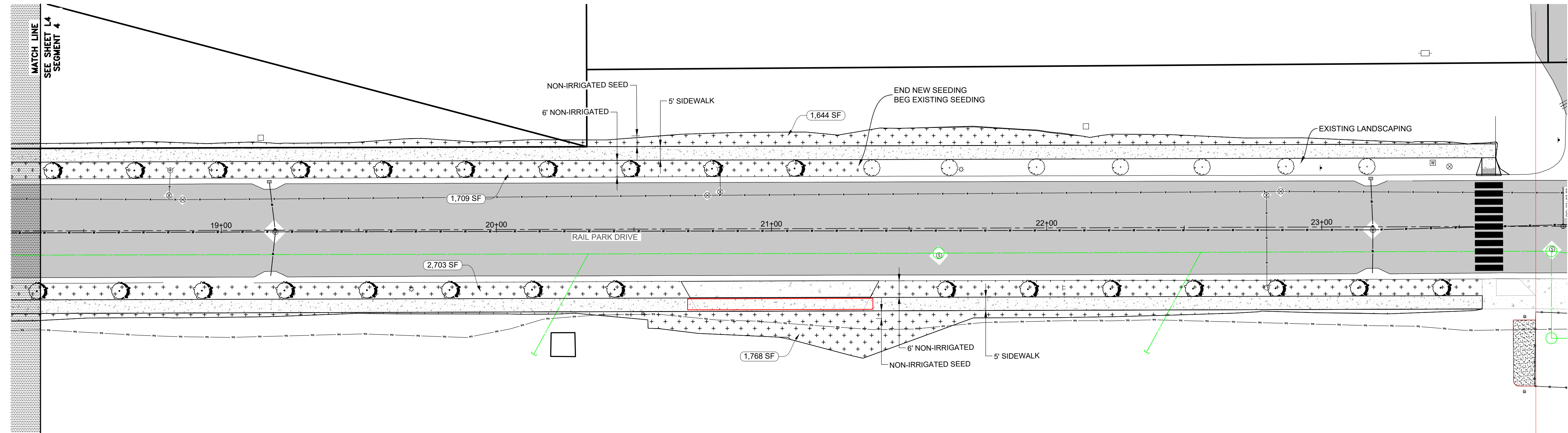
DRAFTED	RH
REVIEWED	MR
PROJECT NUMBER	2325-01621
ISSUE DATE	DECEMBER 2023

GLACIER RAIL PARK
 FLATHEAD COUNTY ECONOMIC DEVELOPMENT AUTHORITY
 KALISPELL, MONTANA
 LANDSCAPE PLAN

SHEET NO.	13
DWG. NO.	L3

LEGEND

SYMBOL	DESCRIPTION
	TREE SYMBOLS VARY, FOR SPECIES SEE SCHEDULE.
	EXISTING TREE
	AREA TO BE NON-IRRIGATED SEEDED, SEE SPEC.
	AREA OF AREA TO BE SEEDED



SEGMENT 5

NOTES:

1. SEE SHEET L5 FOR SEEDING INFORMATION ALONG R/W
2. SEE SHEET L5 FOR TREE INFORMATION IN BOULEVARD
3. TREE SPACING TO BE BETWEEN 30-35'
4. ADJUST TREE SPACING TO AVOID CONFLICTS WITH EXISTING SIGNS, LIGHT POLE, ETC.

APPROXIMATE EXISTING UTILITIES LOCATIONS ADDED IN STREET



CONTRACTOR TO LOCATE UTILITIES PRIOR TO PLANTING

NO.	DATE	DESCRIPTION

DRAFTED	RH
REVIEWED	MR
PROJECT NUMBER	2325-01621
ISSUE DATE	DECEMBER 2023

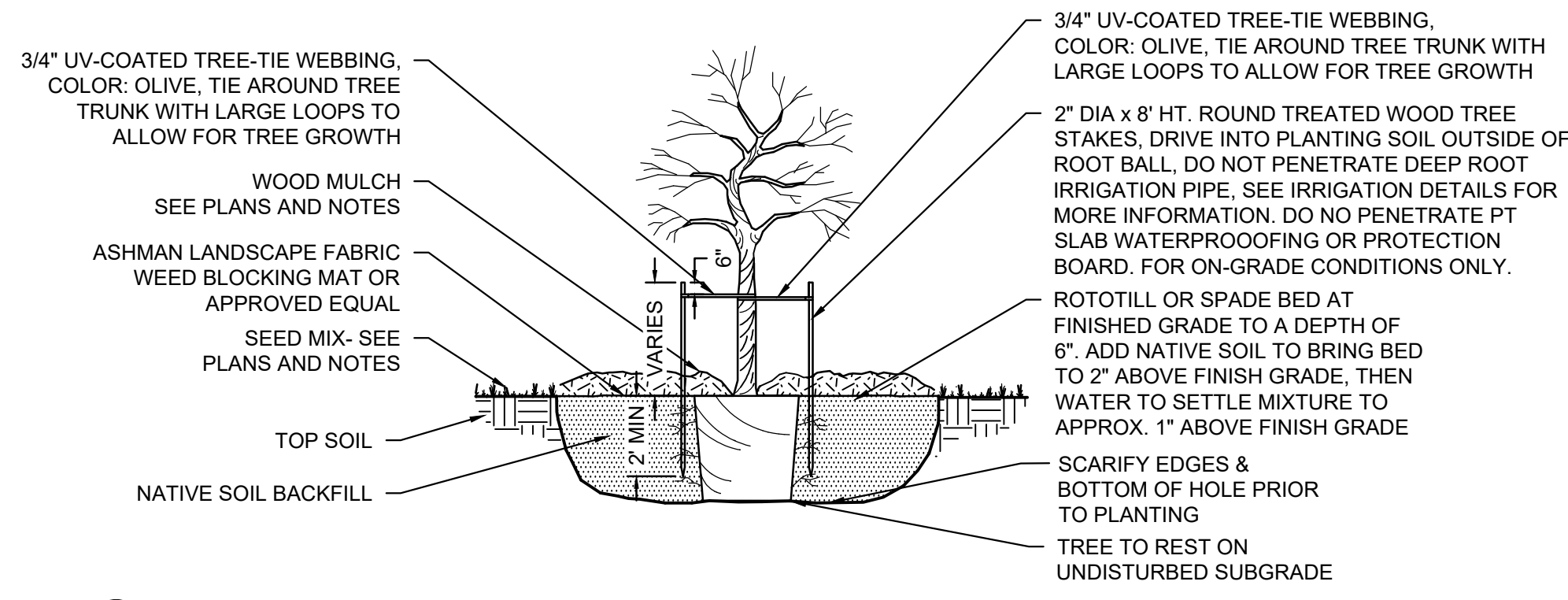
GLACIER RAIL PARK
FLATHEAD COUNTY ECONOMIC DEVELOPMENT AUTHORITY
KALISPELL, MONTANA
LANDSCAPE PLAN

SHEET NO.	12
DWG. NO.	L4

PLANTING NOTES

1. FINE GRADING SHALL BE APPROVED BY ENGINEER PRIOR TO PLANTING OPERATIONS.
2. CONTRACTOR SHALL LAY OUT PLANT MATERIAL PER PLAN AND FACE TO GIVE BEST APPEARANCE OR RELATION TO ADJACENT PLANTS, STRUCTURES OR VIEWS. CONSULT WITH ENGINEER TO OBTAIN APPROVAL PRIOR TO INSTALLATION.
3. PLANT MATERIAL SHALL NOT BE INSTALLED IN AREAS WHICH WILL CAUSE HARM TO ADJACENT STRUCTURES OR OBSTRUCT IRRIGATION SPRAY PATTERN (IF APPLICABLE). NOTIFY THE ENGINEER SHOULD CONFLICTS ARISE.
4. PLANT LOCATIONS ARE DIAGRAMMATIC AND MAY BE ADJUSTED IN THE FIELD AT THE ENGINEER'S REQUEST PRIOR TO INSTALLATION.
5. FINISH GRADE OF PLANTING AREAS SHALL BE 2" BELOW ADJACENT PAVING. TAPER 4" DEPTH MULCH TOP DRESSING TO 1 1/2" DEPTH AT ADJACENT PAVING.
6. ALL NEWLY PLANTED MATERIAL SHALL BE THOROUGHLY SOAKED WITH WATER WITHIN 3 HOURS OF PLANTING. THOROUGHLY RE-SOAK ALL NEW PLANT MATERIALS ONE WEEK AFTER PLANTING COMPLETION. TREE HOLES SHOULD BE SOAKED WITH WATER JUST BEFORE PLANTING.
7. THIRTY DAYS AFTER PLANTING, CONTRACTOR SHALL RE-STAKE AND STRAIGHTEN TREES AS REQUIRED.
8. CONTRACTOR SHALL THOROUGHLY LOOSEN ANY COMPACTED SUBGRADES PRIOR TO PLACING TOPSOIL, TO A MINIMUM DEPTH OF 4".
9. CONTRACTOR SHALL IMPORT CLEAN TOPSOIL FREE OF WEEDS, RHIZOMES, ROCKS, STICKS, AND OTHER DELETERIOUS MATERIAL. ENGINEER IS TO APPROVE TOPSOIL PRIOR TO INSTALLATION. CONTRACTOR SHALL BRING TO FINISH GRADE WITH 6" MIN. OF TOPSOIL IN ALL LAWN AREAS.
10. CONTRACTOR SHALL REMOVE WEEDS, CONTAMINATED SOILS, MISC. WASTE MATERIALS FROM AREA TO BE PLANTED AND SEEDED/SODDED. CONTRACTOR SHALL LOOSEN COMPACTED SUBSOILS BY TILLING AND IMPORTING NEW TOPSOIL AS REQUIRED RESTORING GRADES AND MAINTAINING POSITIVE DRAINAGE AWAY FROM STRUCTURES.
11. DO NOT INSTALL PLANT MATERIAL WHEN AMBIENT TEMPERATURES MAY DROP BELOW 35° F OR RISE ABOVE 90° F. DO NOT INSTALL PLANT MATERIAL WHEN WIND VELOCITY EXCEEDS 30 MPH. PREFERRED PLANTING DATES SHALL BE AS FOLLOWS:
 PRIMARY PLANTING PERIOD: FALL DORMANT PLANTING
 SECONDARY PLANTING PERIOD: SPRING DORMANT PLANTING BY JUNE 1ST
12. ALL TREES TO RECEIVE 4" DEPTH OF SHREDDED HARDWOOD BARK MULCH 3 TIMES THE DIA. OF THE ROOTBALL UNLESS OTHERWISE NOTED. MULCH SHALL BE INCLUDED IN THE PRICE BID FOR TREES.
13. ALL PLANT MATERIAL TO INCLUDE A 2-YEAR REPLACEMENT WARRANTY FROM DATE OF ACCEPTANCE BY OWNER OR ENGINEER.

NON IRRIGATED SEED MIX:	
TYPE	% MIX
KENTUCKY BLUEGRASS	40%
EPHRAIM CRESTED WHEAT GRASS	40%
PERENNIAL RYEGRASS	20%
SEED RATE: 4 lbs / 1,000 SF DRILLSEED	
SEED RATE 5lbs/1000 SF HYDROSEED	



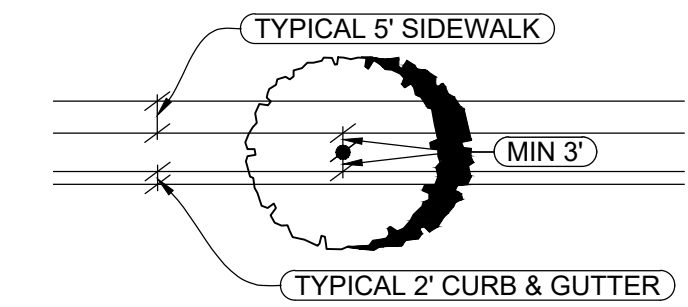
1 TREE PLANTING DETAIL
L5 NO SCALE

NOTE: ALL TREES TO INCLUDE DEER PROTECTION. 2 WOODEN POSTS WITH METAL FENCING MATERIAL, 2' PERIMETER AROUND TRUNK. QUESTIONS? CALL KALISPELL PARKS & RECREATION

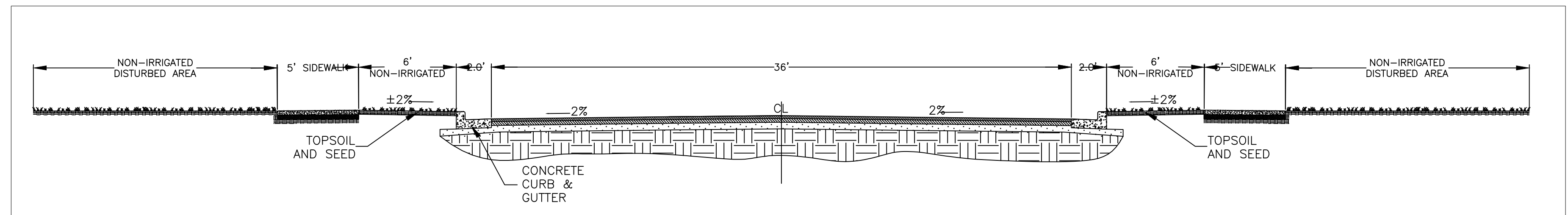
NOTES:
 FOR LIST OF ACCEPTABLE TREES SEE
<https://www.kalispell.com/documentcenter/view/3092/recommended-boulevard-trees-for-kalispell-3-2020>
 SELECTION MUST BE FROM SMALL TREE SECTION ONLY,
 MUST BE HARDY & FLOURISH IN SOIL LACKING NUTRIENTS.

TOTAL NUMBER OF TREES 120

PREFERRED TREE SPECIES AND QUANTITIES:
 60 EACH HAWTHORN
 60 EACH IVORY SILK LILACS



2 TREE PLACEMENT DETAIL
L5 NO SCALE



4 TYPICAL SECTION SHOWING SEEDING AREAS-FACING WEST
L5 NO SCALE

ONE CALL BEFORE DIGGING
 1-800-424-5555
 CONTRACTOR TO LOCATE UTILITIES PRIOR TO PLANTING

DRAWING SCALE IS 1" = 20' PRINTED ON 24"x36" PAPER

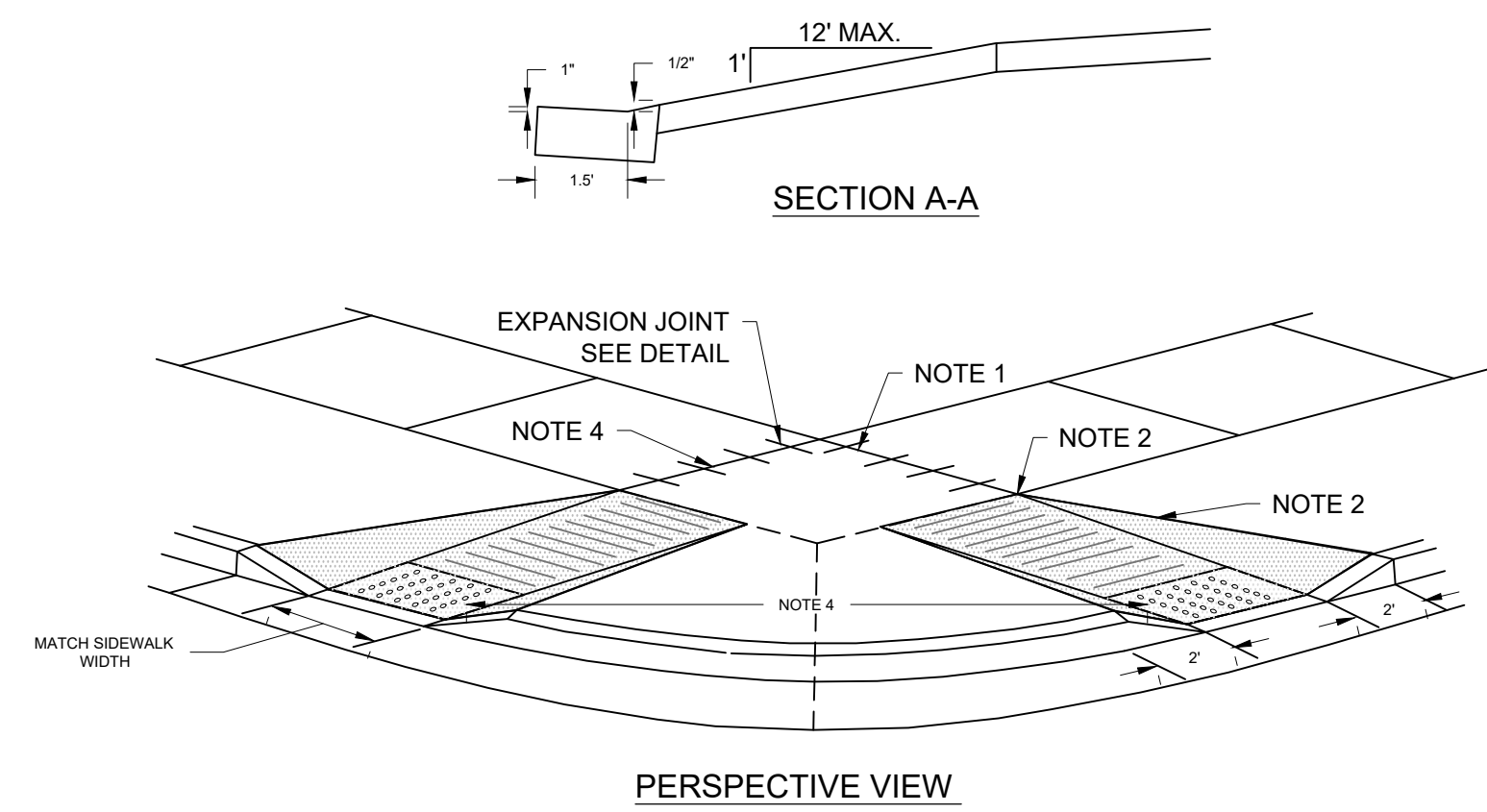


NO.	DATE	DESCRIPTION

DRAFTED RH
REVIEWED MR
PROJECT NUMBER 2325-01621
ISSUE DATE DECEMBER 2023

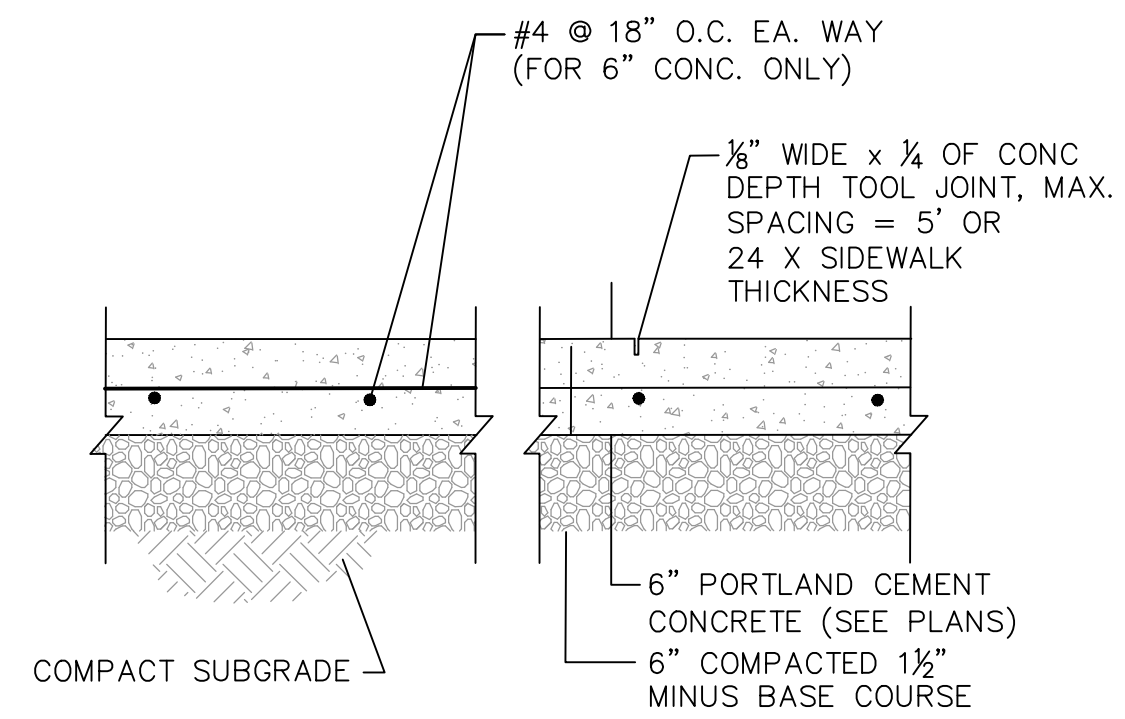
GLACIER RAIL PARK
 FLATHEAD COUNTY ECONOMIC DEVELOPMENT AUTHORITY
 KALISPELL, MONTANA
 LANDSCAPE DETAILS

SHEET NO. 15
DWG. NO. L5

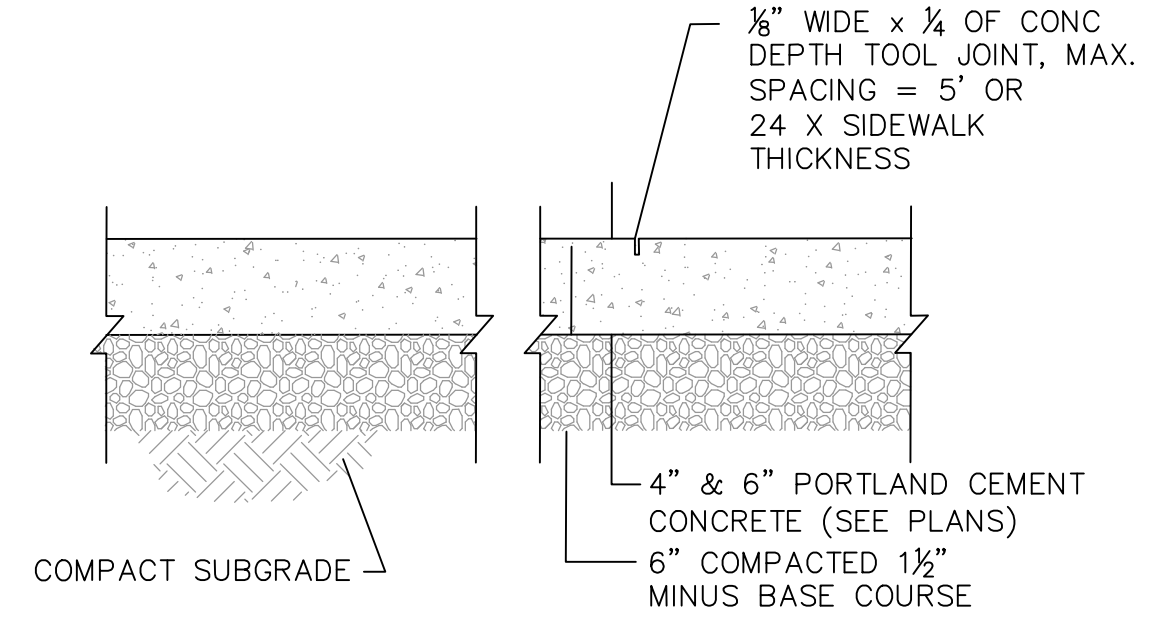


- NOTES:
- 3/4" EXPANSION JOINT W/ 1/2" x 12" DOWELS AND 8" PAPER TUBES, OR #4 REINFORCING STEEL.
 - 3/4" EXPANSION JOINTS AND DOWELS FOR FULL SIDEWALK ONLY, AS DIRECTED BY ENGINEER.
 - RESIDENTIAL INTERSECTIONS SHALL USE 4.5' WALK AND RAMP SET 1.5' FROM PROPERTY LINE. UNLESS MOUNTABLE CURBS OR 6" SIDEWALK IS USED.
 - DETECTABLE WARNING PANEL MIN. 2' x 4'. PLACEMENT OF DETECTION PANELS SHALL BE DETERMINED BY ENGINEER ON ANY RADIUS 16' OR LARGER.
 - INSTALL TRUNCATED DOMES WHERE INDICATED ON SITE PLAN.

ADA RAMP
SCALE: NOT TO SCALE

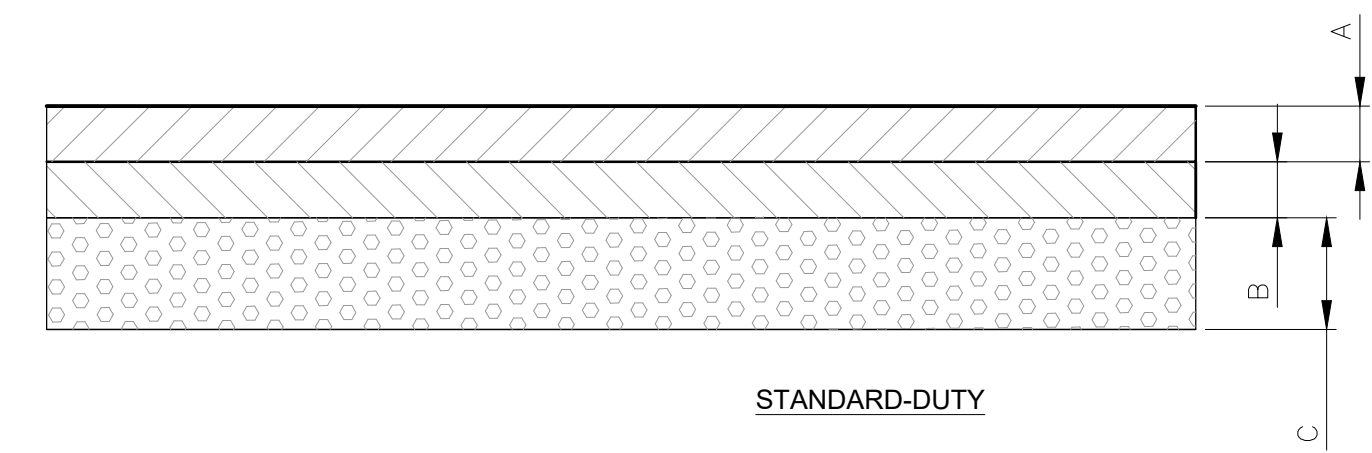


6" REINFORCED CONCRETE SIDEWALK
SCALE: NOT TO SCALE



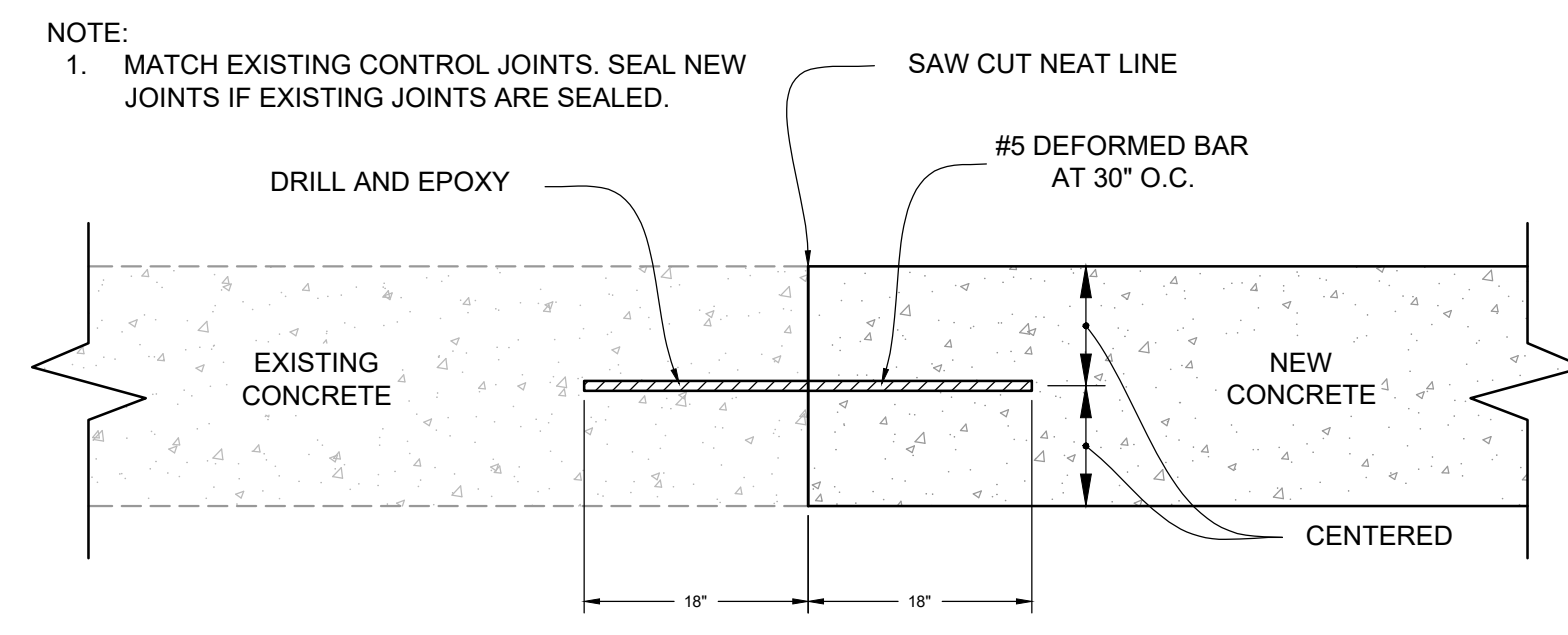
4" & 6" CONCRETE SIDEWALK
SCALE: NOT TO SCALE

SEE KALISPELL STANDARD DRAWING ST-10

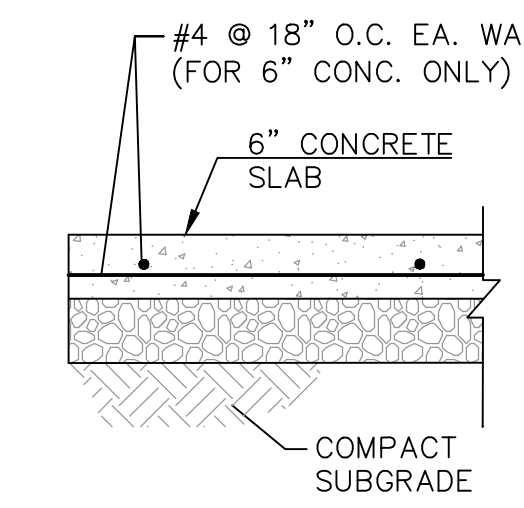


- STANDARD-DUTY
- | | |
|----------------------------|----------------------------|
| (A) ASPHALT SURFACE COURSE | MATCH EXISTING, ASSUMED 3" |
| (B) CRUSH BASE COURSE | EXISTING |
| (C) SUBBASE COURSE | EXISTING |

ASPHALT PAVEMENT
SCALE: NOT TO SCALE

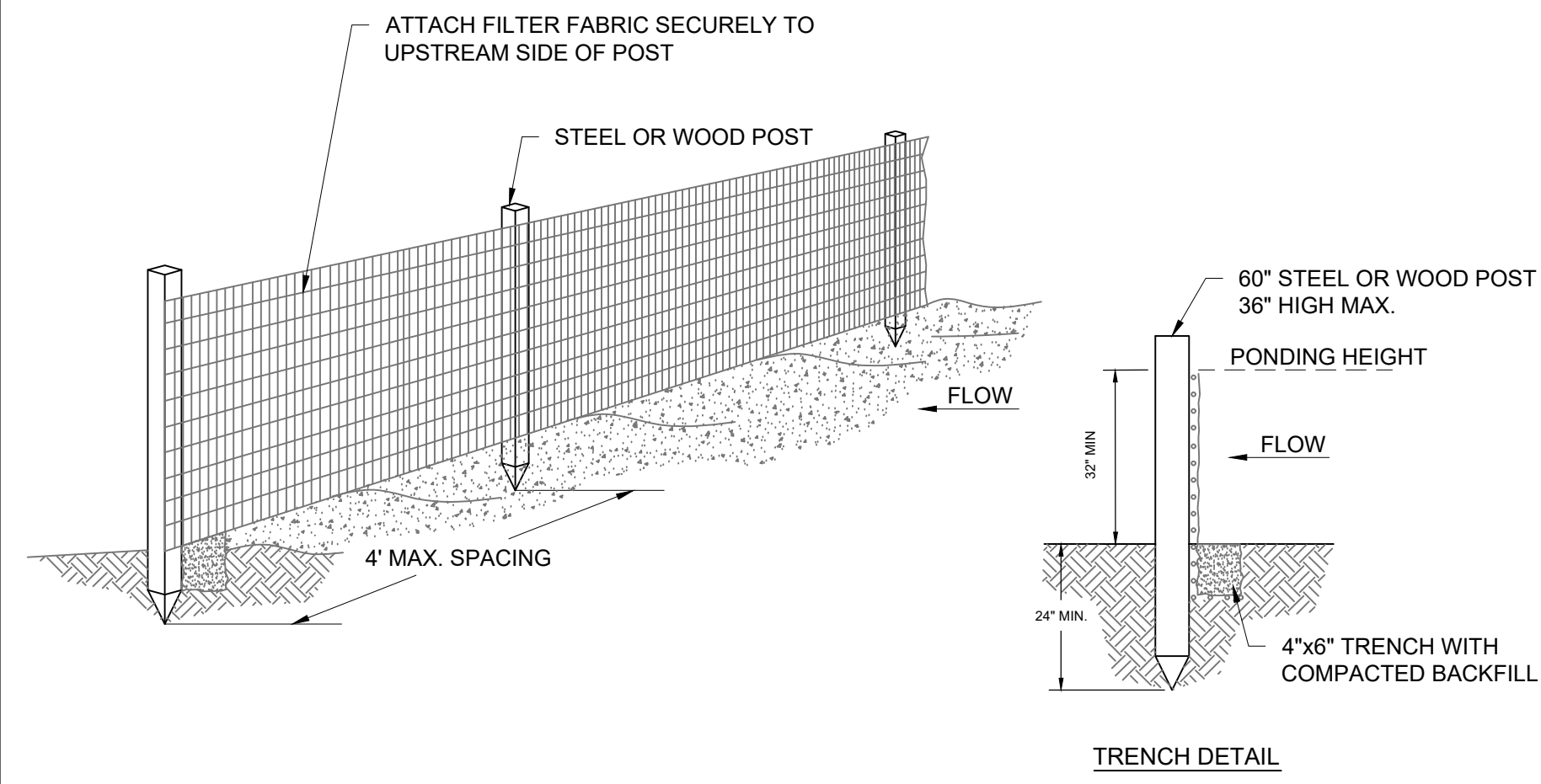


CONSTRUCTION JOINT
SCALE: NOT TO SCALE



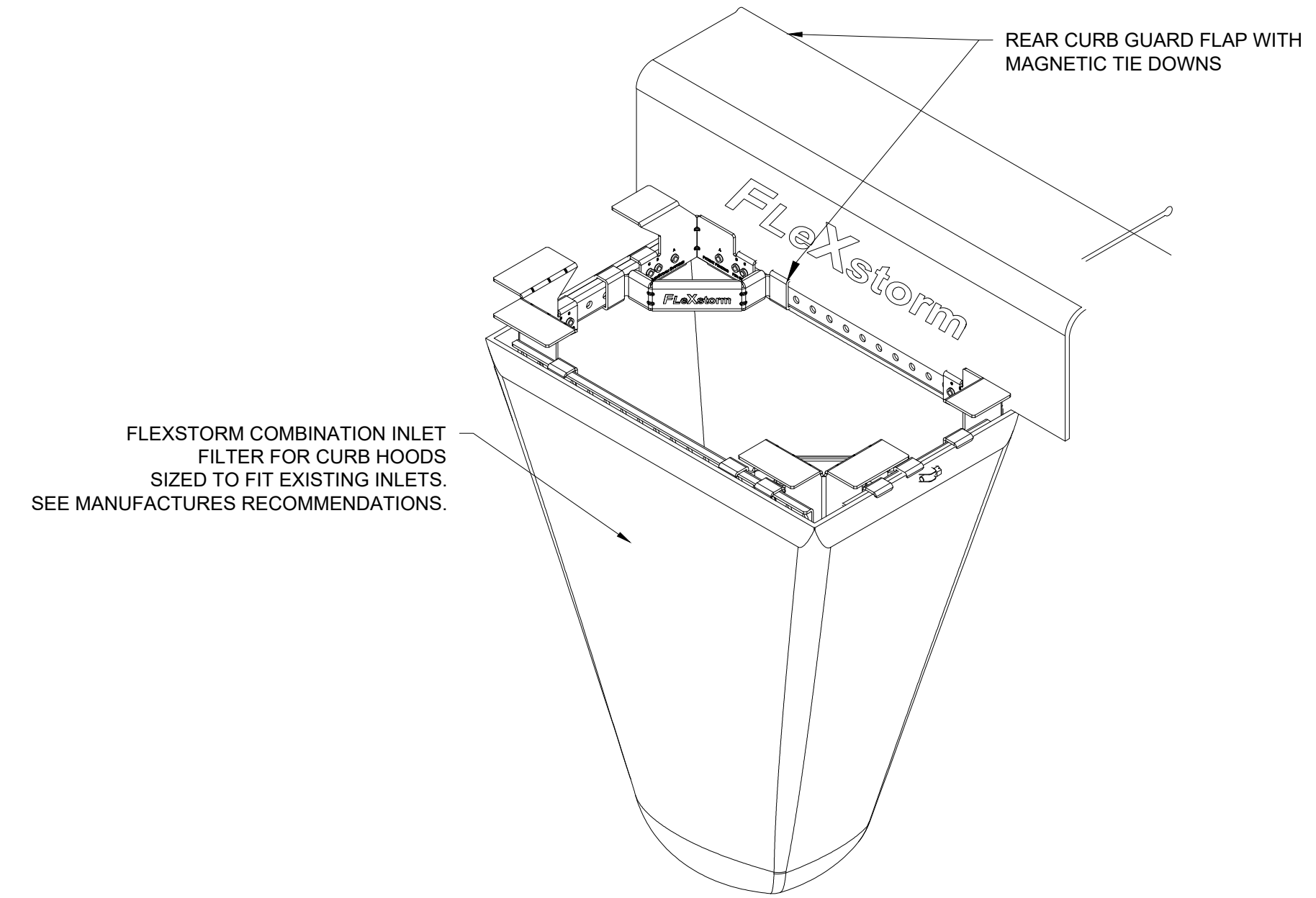
- NOTES:
- CONTROL JOINTS SHALL BE SAWED OR TOOLED TO 1/3 CONCRETE DEPTH (MIN.)
 - ALL EXPANSION JOINTS SHALL BE SEALED
 - EXPANSION JOINT SPACING SHALL NOT EXCEED 100'.

REINFORCED PORTLAND CEMENT
SCALE: NOT TO SCALE



- NOTES:
- SILT FENCE SHALL BE PLACED ON SLOPE CONTOURS TO MAXIMIZE PONDING EFFICIENCY.
 - INSPECT AND REPAIR FENCE AFTER EACH STORM EVENT AND REMOVE SEDIMENT WHEN NECESSARY.
 - REMOVED SEDIMENT SHALL BE DEPOSITED TO AN AREA THAT WILL NOT CONTRIBUTE SEDIMENT OFF-SITE AND CAN BE PERMANENTLY STABILIZED.

SILT FENCE
SCALE: NOT TO SCALE



- NOTES:
- CONTRACTOR SHALL INSTALL INLET PROTECTION INTO ALL STORM INLETS AFTER INLET CONSTRUCTION.

INLET PROTECTION
SCALE: NOT TO SCALE

NO.	DATE

DRAFTED	RH
REVIEWED	MR
PROJECT NUMBER	2325-01621
ISSUE DATE	DECEMBER 2023

GLACIER RAIL PARK
 FLATHEAD COUNTY ECONOMIC DEVELOPMENT AUTHORITY
 KALISPELL, MONTANA
DETAILS

SHEET NO.	18
DWG. NO.	D1